

CXCR5 Antibody

Rabbit mAb

Catalog # AP92019

Product Information

Application	WB, IF, FC, ICC
Primary Accession	P32302
Reactivity	Rat, Human, Mouse
Clonality	Monoclonal
Other Names	BLR1; CD185; Cxcr5; MDR15;
Isotype	Rabbit IgG
Host	Rabbit
Calculated MW	41955

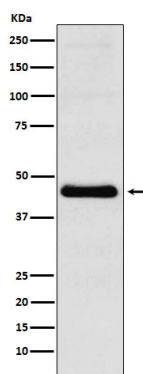
Additional Information

Dilution	WB 1:500~1:2000 ICC/IF 1:50~1:200 FC 1:50
Purification	Affinity-chromatography
Immunogen	A synthesized peptide derived from human CXCR5
Description	Cytokine receptor that binds to B-lymphocyte chemoattractant (BLC). Involved in B-cell migration into B-cell follicles of spleen and Peyer patches but not into those of mesenteric or peripheral lymph nodes. May have a regulatory function in Burkitt lymphoma (BL) lymphomagenesis and/or B-cell differentiation.
Storage Condition and Buffer	Rabbit IgG in phosphate buffered saline , pH 7.4, 150mM NaCl, 0.02% sodium azide and 50% glycerol. Store at +4°C short term. Store at -20°C long term. Avoid freeze / thaw cycle.

Protein Information

Name	CXCR5
Synonyms	BLR1, MDR15
Function	Cytokine receptor that binds to B-lymphocyte chemoattractant (BLC). Involved in B-cell migration into B-cell follicles of spleen and Peyer patches but not into those of mesenteric or peripheral lymph nodes. May have a regulatory function in Burkitt lymphoma (BL) lymphomagenesis and/or B-cell differentiation.
Cellular Location	Cell membrane; Multi-pass membrane protein.
Tissue Location	Expression in mature B-cells and Burkitt lymphoma cells

Images



Western blot analysis of CXCR5 expression in Molt4 cell lysate.

Please note: All products are 'FOR RESEARCH USE ONLY. NOT FOR USE IN DIAGNOSTIC OR THERAPEUTIC PROCEDURES'.