

GLO1 Antibody

Rabbit mAb

Catalog # AP92021

Product Information

Application	WB, FC
Primary Accession	Q04760
Reactivity	Rat, Human, Mouse
Clonality	Monoclonal
Other Names	Aldoketomutase; glo1; GLOD1; Glx I; GLYI;
Isotype	Rabbit IgG
Host	Rabbit
Calculated MW	20778

Additional Information

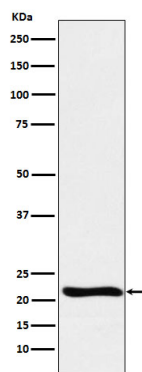
Dilution	WB 1:500~1:2000 FC 1:50
Purification	Affinity-chromatography
Immunogen	A synthesized peptide derived from human GLO1
Description	Catalyzes the conversion of hemimercaptal, formed from methylglyoxal and glutathione, to S-lactoylglutathione.
Storage Condition and Buffer	Rabbit IgG in phosphate buffered saline , pH 7.4, 150mM NaCl, 0.02% sodium azide and 50% glycerol. Store at +4°C short term. Store at -20°C long term. Avoid freeze / thaw cycle.

Protein Information

Name	GLO1
Function	Catalyzes the conversion of hemimercaptal, formed from methylglyoxal and glutathione, to S-lactoylglutathione (PubMed: 20454679 , PubMed: 23122816 , PubMed: 9705294). Involved in the regulation of TNF-induced transcriptional activity of NF-kappa-B (PubMed: 19199007). Required for normal osteoclastogenesis (By similarity).

Images

Western blot analysis of GLO1 expression in Raji cell lysate.



Please note: All products are 'FOR RESEARCH USE ONLY. NOT FOR USE IN DIAGNOSTIC OR THERAPEUTIC PROCEDURES'.