

# SFRP4 Antibody

Rabbit mAb

Catalog # AP92031

## Product Information

|                          |                           |
|--------------------------|---------------------------|
| <b>Application</b>       | WB, IHC, IF, FC, ICC, IHF |
| <b>Primary Accession</b> | <a href="#">Q6FHJ7</a>    |
| <b>Reactivity</b>        | Rat, Human, Mouse         |
| <b>Clonality</b>         | Monoclonal                |
| <b>Other Names</b>       | FRP4; FrpHE; PYL; Sfrp4;  |
| <b>Isotype</b>           | Rabbit IgG                |
| <b>Host</b>              | Rabbit                    |
| <b>Calculated MW</b>     | 39827                     |

## Additional Information

|                                     |  |
|-------------------------------------|--|
| <b>Dilution</b>                     | WB 1:500~1:2000 IHC 1:50~1:200 ICC/IF 1:50~1:200 FC 1:50   |
| <b>Purification</b>                 | Affinity-chromatography  |
| <b>Immunogen</b>                    | A synthesized peptide derived from human SFRP4   |
| <b>Description</b>                  | Soluble frizzled-related proteins (sFRPS) function as modulators of Wnt signaling through direct interaction with Wnts. They have a role in regulating cell growth and differentiation in specific cell types. |
| <b>Storage Condition and Buffer</b> | Rabbit IgG in phosphate buffered saline , pH 7.4, 150mM NaCl, 0.02% sodium azide and 50% glycerol. Store at +4°C short term. Store at -20°C long term. Avoid freeze / thaw cycle.                              |

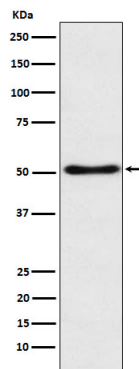
## Protein Information

|                          |   |
|--------------------------|---|
| <b>Name</b>              | SFRP4   |
| <b>Synonyms</b>          | FRPHE   |
| <b>Function</b>          | Soluble frizzled-related proteins (sFRPS) function as modulators of Wnt signaling through direct interaction with Wnts. They have a role in regulating cell growth and differentiation in specific cell types (By similarity). SFRP4 plays a role in bone morphogenesis. May also act as a regulator of adult uterine morphology and function. May also increase apoptosis during ovulation possibly through modulation of FZ1/FZ4/WNT4 signaling (By similarity). Has phosphaturic effects by specifically inhibiting sodium-dependent phosphate uptake (PubMed: <a href="#">12952927</a> ). |
| <b>Cellular Location</b> | Secreted. Note=Cytoplasmic in ovarian tumor cells   |
| <b>Tissue Location</b>   | Expressed in mesenchymal cells. Highly expressed in the stroma of proliferative endometrium. Expressed in cardiomyocytes Shows moderate to strong expression in ovarian tumors with expression increasing as the tumor  |

stage increases. In ovarian tumors, expression levels are inversely correlated with expression of CTNNB1 (at protein level).

## Images

---



Western blot analysis of SFRP4 expression in 293T cell lysate.

Please note: All products are 'FOR RESEARCH USE ONLY. NOT FOR USE IN DIAGNOSTIC OR THERAPEUTIC PROCEDURES'.