

H Cadherin Antibody

Rabbit mAb

Catalog # AP92035

Product Information

Application	WB, IHC
Primary Accession	P55290
Reactivity	Rat, Human, Mouse
Clonality	Monoclonal
Other Names	CDH13; CDHH; H-cadherin; Heart cadherin; P105; T cad; T Cadherin; Truncated cadherin;
Isotype	Rabbit IgG
Host	Rabbit
Calculated MW	78287

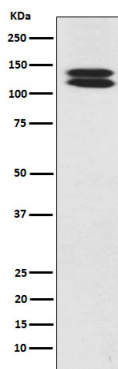
Additional Information

Dilution	WB 1:500~1:2000 IHC 1:50~1:200
Purification	Affinity-chromatography
Immunogen	A synthesized peptide derived from human H Cadherin
Description	Cadherins are calcium dependent cell adhesion proteins. They preferentially interact with themselves in a homophilic manner in connecting cells; cadherins may thus contribute to the sorting of heterogeneous cell types. May act as a negative regulator of neural cell growth.
Storage Condition and Buffer	Rabbit IgG in phosphate buffered saline , pH 7.4, 150mM NaCl, 0.02% sodium azide and 50% glycerol. Store at +4°C short term. Store at -20°C long term. Avoid freeze / thaw cycle.

Protein Information

Name	CDH13
Synonyms	CDHH
Function	Cadherins are calcium-dependent cell adhesion proteins. They preferentially interact with themselves in a homophilic manner in connecting cells; cadherins may thus contribute to the sorting of heterogeneous cell types. May act as a negative regulator of neural cell growth.
Cellular Location	Cell membrane {ECO:0000250 UniProtKB:Q9WTR5}; Lipid-anchor, GPI-anchor. Cytoplasm {ECO:0000250 UniProtKB:Q9WTR5}
Tissue Location	Highly expressed in heart. In the CNS, expressed in cerebral cortex, medulla, hippocampus, amygdala, thalamus and substantia nigra. No expression detected in cerebellum or spinal cord

Images



Western blot analysis of H Cadherin expression in Human fetal heart lysate.

Please note: All products are 'FOR RESEARCH USE ONLY. NOT FOR USE IN DIAGNOSTIC OR THERAPEUTIC PROCEDURES'.