

ADH6 Antibody (Center)

Purified Rabbit Polyclonal Antibody (Pab)

Catalog # AP9203c

Product Information

Application	WB, IHC-P, FC, E
Primary Accession	P28332
Reactivity	Human
Host	Rabbit
Clonality	Polyclonal
Isotype	Rabbit IgG
Clone Names	RB18253
Calculated MW	39073
Antigen Region	209-240

Additional Information

Gene ID	130
Other Names	Alcohol dehydrogenase 6, ADH6
Target/Specificity	This ADH6 antibody is generated from rabbits immunized with a KLH conjugated synthetic peptide between 209-240 amino acids from the Central region of human ADH6.
Dilution	WB~~1:1000 IHC-P~~1:100~500 FC~~1:10~50 E~~Use at an assay dependent concentration.
Format	Purified polyclonal antibody supplied in PBS with 0.09% (W/V) sodium azide. This antibody is prepared by Saturated Ammonium Sulfate (SAS) precipitation followed by dialysis against PBS.
Storage	Maintain refrigerated at 2-8°C for up to 2 weeks. For long term storage store at -20°C in small aliquots to prevent freeze-thaw cycles.
Precautions	ADH6 Antibody (Center) is for research use only and not for use in diagnostic or therapeutic procedures.

Protein Information

Name	ADH6
Function	Alcohol dehydrogenase (PubMed: 1755855). Catalyzes the NAD- dependent oxidation of primary alcohols to the corresponding aldehydes (PubMed: 1755855). Oxidizes secondary alcohols to the corresponding ketones (By similarity).

Cellular Location	Cytoplasm.
Tissue Location	Stomach and liver..

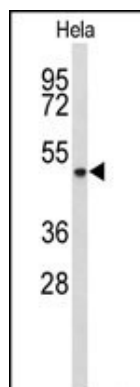
Background

ADH6 encodes class V alcohol dehydrogenase, which is a member of the alcohol dehydrogenase family. Members of this family metabolize a wide variety of substrates, including ethanol, retinol, other aliphatic alcohols, hydroxysteroids, and lipid peroxidation products. This protein is expressed in the stomach as well as in the liver, and it contains a glucocorticoid response element upstream of its 5' UTR, which is a steroid hormone receptor binding site.

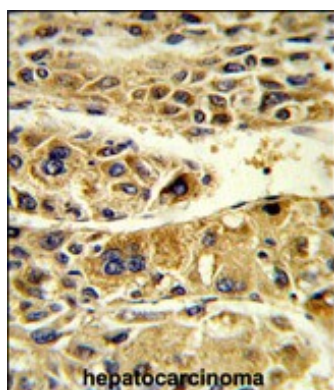
References

Cui,R., et.al., Gastroenterology 137 (5), 1768-1775 (2009)
 Saito,A., et.al., J. Hum. Genet. 54 (6), 317-323 (2009)
 Tabakoff,B., et.al., BMC Biol. 7, 70 (2009)

Images

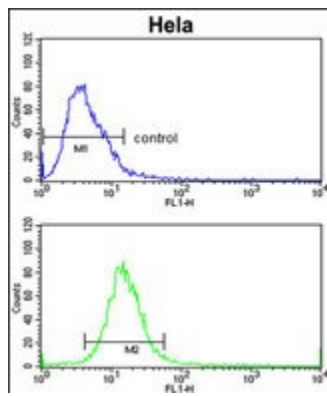


Western blot analysis of ADH6 Antibody (Center) (Cat. #AP9203c) in HeLa cell line lysates (35ug/lane). ADH6 (arrow) was detected using the purified Pab.



Formalin-fixed and paraffin-embedded human hepatocarcinoma reacted with ADH6 Antibody (Center), which was peroxidase-conjugated to the secondary antibody, followed by DAB staining. This data demonstrates the use of this antibody for immunohistochemistry; clinical relevance has not been evaluated.

ADH6 Antibody (Center) (Cat. #AP9203c) flow cytometric analysis of HeLa cells (bottom histogram) compared to a negative control cell (top histogram). FITC-conjugated goat-anti-rabbit secondary antibodies were used for the analysis.



Please note: All products are 'FOR RESEARCH USE ONLY. NOT FOR USE IN DIAGNOSTIC OR THERAPEUTIC PROCEDURES'.