

# PEDF Antibody

Rabbit mAb

Catalog # AP92040

## Product Information

---

<b>Application</b>	WB, FC
<b>Primary Accession</b>	<a href="#">P36955</a>
<b>Reactivity</b>	Human
<b>Clonality</b>	Monoclonal
<b>Other Names</b>	EPC1; OI12; OI6; PEDF; PIG35; Serpinf1;
<b>Isotype</b>	Rabbit IgG
<b>Host</b>	Rabbit
<b>Calculated MW</b>	46312

## Additional Information

---

<b>Dilution</b>	WB 1:500~1:2000 FC 1:100
<b>Purification</b>	Affinity-chromatography
<b>Immunogen</b>	A synthesized peptide derived from human PEDF
<b>Description</b>	Neurotrophic protein; induces extensive neuronal differentiation in retinoblastoma cells. Potent inhibitor of angiogenesis. As it does not undergo the S (stressed) to R (relaxed) conformational transition characteristic of active serpins, it exhibits no serine protease inhibitory activity.
<b>Storage Condition and Buffer</b>	Rabbit IgG in phosphate buffered saline , pH 7.4, 150mM NaCl, 0.02% sodium azide and 50% glycerol. Store at +4°C short term. Store at -20°C long term. Avoid freeze / thaw cycle.

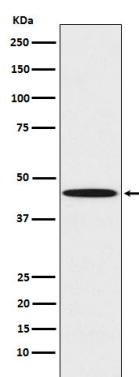
## Protein Information

---

<b>Name</b>	SERPINF1
<b>Synonyms</b>	PEDF
<b>Function</b>	Neurotrophic protein; induces extensive neuronal differentiation in retinoblastoma cells. Potent inhibitor of angiogenesis. As it does not undergo the S (stressed) to R (relaxed) conformational transition characteristic of active serpins, it exhibits no serine protease inhibitory activity.
<b>Cellular Location</b>	Secreted. Melanosome. Note=Enriched in stage I melanosomes
<b>Tissue Location</b>	Retinal pigment epithelial cells and blood plasma.

## Images

---



Western blot analysis of PEDF expression in K562 cell lysate.

Please note: All products are 'FOR RESEARCH USE ONLY. NOT FOR USE IN DIAGNOSTIC OR THERAPEUTIC PROCEDURES'.