

KHSRP Antibody

Rabbit mAb

Catalog # AP92042

Product Information

Application	WB, IHC, IF, ICC, IP, IHF
Primary Accession	Q92945
Reactivity	Rat, Human, Mouse
Clonality	Monoclonal
Other Names	FBP2; FUBP2; KHSRP; KSRP; p75;
Isotype	Rabbit IgG
Host	Rabbit
Calculated MW	73115

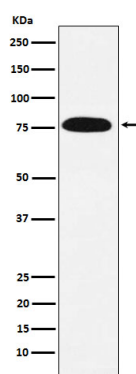
Additional Information

Dilution	WB 1:500~1:2000 IHC 1:50~1:200 ICC/IF 1:50~1:200 IP 1:50
Purification	Affinity-chromatography
Immunogen	A synthesized peptide derived from human KHSRP
Description	Binds to the dendritic targeting element and may play a role in mRNA trafficking (By similarity). Part of a ternary complex that binds to the downstream control sequence (DCS) of the pre-mRNA. Mediates exon inclusion in transcripts that are subject to tissue-specific alternative splicing.
Storage Condition and Buffer	Rabbit IgG in phosphate buffered saline , pH 7.4, 150mM NaCl, 0.02% sodium azide and 50% glycerol. Store at +4°C short term. Store at -20°C long term. Avoid freeze / thaw cycle.

Protein Information

Name	KHSRP
Synonyms	FUBP2
Function	Binds to the dendritic targeting element and may play a role in mRNA trafficking (By similarity). Part of a ternary complex that binds to the downstream control sequence (DCS) of the pre-mRNA. Mediates exon inclusion in transcripts that are subject to tissue- specific alternative splicing. May interact with single-stranded DNA from the far-upstream element (FUSE). May activate gene expression. Also involved in degradation of inherently unstable mRNAs that contain AU-rich elements (AREs) in their 3'-UTR, possibly by recruiting degradation machinery to ARE-containing mRNAs.
Cellular Location	Nucleus. Cytoplasm. Note=A small proportion is also found in the cytoplasm of neuronal cell bodies and dendrites.
Tissue Location	Detected in neural and non-neural cell lines.

Images



Western blot analysis of KHSRP expression in HeLa cell lysate.

Please note: All products are 'FOR RESEARCH USE ONLY. NOT FOR USE IN DIAGNOSTIC OR THERAPEUTIC PROCEDURES'.