

# Pancreatic Lipase (PNLIP) Antibody

Rabbit mAb

Catalog # AP92064

## Product Information

---

<b>Application</b>	WB, IHC
<b>Primary Accession</b>	<a href="#">P16233</a>
<b>Reactivity</b>	Human
<b>Clonality</b>	Monoclonal
<b>Other Names</b>	Pancreatic lipase; PL; PNLIP; PNLIPD; PTL;
<b>Isotype</b>	Rabbit IgG
<b>Host</b>	Rabbit
<b>Calculated MW</b>	51157

## Additional Information

---

<b>Dilution</b>	WB 1:1000~1:5000 IHC 1:50~1:200
<b>Purification</b>	Affinity-chromatography
<b>Immunogen</b>	A synthesized peptide derived from human Pancreatic Lipase ( PNLIP )
<b>Description</b>	Belongs to the AB hydrolase superfamily. Lipase family. Contains 1 PLAT domain.
<b>Storage Condition and Buffer</b>	Rabbit IgG in phosphate buffered saline , pH 7.4, 150mM NaCl, 0.02% sodium azide and 50% glycerol. Store at +4°C short term. Store at -20°C long term. Avoid freeze / thaw cycle.

## Protein Information

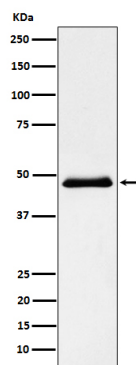
---

<b>Name</b>	PNLIP ( <a href="#">HGNC:9155</a> )
<b>Function</b>	Plays an important role in fat metabolism. It preferentially splits the esters of long-chain fatty acids at positions 1 and 3, producing mainly 2-monoacylglycerol and free fatty acids, and shows considerably higher activity against insoluble emulsified substrates than against soluble ones.
<b>Cellular Location</b>	Secreted.

## Images

---

Western blot analysis of Pancreatic Lipase (PNLIP) expression in Human pancreas lysate.



Please note: All products are 'FOR RESEARCH USE ONLY. NOT FOR USE IN DIAGNOSTIC OR THERAPEUTIC PROCEDURES'.