

CD105 Antibody

Rabbit mAb

Catalog # AP92079

Product Information

Application	WB, IHC
Primary Accession	P17813
Reactivity	Human
Clonality	Monoclonal
Other Names	CD105; END; Endoglin; Eng; HHT1; ORW; ORW1; SN6;
Isotype	Rabbit IgG
Host	Rabbit
Calculated MW	70578

Additional Information

Dilution	WB 1:500~1:2000 IHC 1:50~1:200
Purification	Affinity-chromatography
Immunogen	A synthesized peptide derived from human CD105
Description	Major glycoprotein of vascular endothelium. May play a critical role in the binding of endothelial cells to integrins and/or other RGD receptors.
Storage Condition and Buffer	Rabbit IgG in phosphate buffered saline , pH 7.4, 150mM NaCl, 0.02% sodium azide and 50% glycerol. Store at +4°C short term. Store at -20°C long term. Avoid freeze / thaw cycle.

Protein Information

Name	ENG
Synonyms	END
Function	Vascular endothelium glycoprotein that plays an important role in the regulation of angiogenesis (PubMed: 21737454 , PubMed: 23300529). Required for normal structure and integrity of adult vasculature (PubMed: 7894484). Regulates the migration of vascular endothelial cells (PubMed: 17540773). Required for normal extraembryonic angiogenesis and for embryonic heart development (By similarity). May regulate endothelial cell shape changes in response to blood flow, which drive vascular remodeling and establishment of normal vascular morphology during angiogenesis (By similarity). May play a critical role in the binding of endothelial cells to integrins and/or other RGD receptors (PubMed: 1692830). Acts as a TGF-beta coreceptor and is involved in the TGF-beta/BMP signaling cascade that ultimately leads to the activation of SMAD transcription factors (PubMed: 21737454 , PubMed: 22347366 , PubMed: 23300529 , PubMed: 8370410). Required for GDF2/BMP9 signaling through SMAD1 in endothelial cells and modulates TGFβ1 signaling through SMAD3 (PubMed: 21737454 , PubMed: 22347366 , PubMed: 23300529).

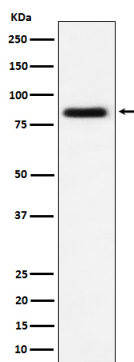
Cellular Location

Cell membrane; Single-pass type I membrane protein

Tissue Location

Detected on umbilical vein endothelial cells (PubMed:10625079). Detected in placenta (at protein level) (PubMed:1692830). Detected on endothelial cells (PubMed:1692830)

Images



Western blot analysis of CD105 expression in HUVEC cell lysate.

Please note: All products are 'FOR RESEARCH USE ONLY. NOT FOR USE IN DIAGNOSTIC OR THERAPEUTIC PROCEDURES'.