

PBRM1 Antibody

Rabbit mAb

Catalog # AP92088

Product Information

Application	WB, IHC, IF, FC, ICC, IHF
Primary Accession	Q86U86
Reactivity	Rat, Human, Mouse
Clonality	Monoclonal
Other Names	BAF180; hPB1; PB1; Pbrm1; polybromo 1; Polybromo-1D;
Isotype	Rabbit IgG
Host	Rabbit
Calculated MW	192948

Additional Information

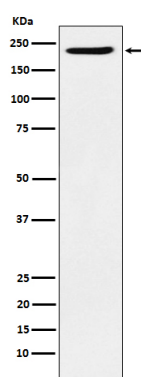
Dilution	WB 1:500~1:2000 IHC 1:100~1:500 ICC/IF 1:50~1:100 FC 1:50
Purification	Affinity-chromatography
Immunogen	A synthesized peptide derived from human PBRM1
Description	Involved in transcriptional activation and repression of select genes by chromatin remodeling (alteration of DNA-nucleosome topology). Act as a negative regulator of cell proliferation.
Storage Condition and Buffer	Rabbit IgG in phosphate buffered saline , pH 7.4, 150mM NaCl, 0.02% sodium azide and 50% glycerol. Store at +4°C short term. Store at -20°C long term. Avoid freeze / thaw cycle.

Protein Information

Name	PBRM1
Synonyms	BAF180, PB1
Function	Involved in transcriptional activation and repression of select genes by chromatin remodeling (alteration of DNA-nucleosome topology). Required for the stability of the SWI/SNF chromatin remodeling complex SWI/SNF-B (PBAF). Acts as a negative regulator of cell proliferation.
Cellular Location	Nucleus
Tissue Location	Widely expressed..

Images

Western blot analysis of PBRM1 expression in HeLa cell



lysate.

Please note: All products are 'FOR RESEARCH USE ONLY. NOT FOR USE IN DIAGNOSTIC OR THERAPEUTIC PROCEDURES'.