

TAGLN Antibody

Rabbit mAb

Catalog # AP92092

Product Information

Application	WB, IHC
Primary Accession	Q01995
Reactivity	Human, Mouse
Clonality	Monoclonal
Other Names	TAGLN; Transgelin; SM22; SM22 alpha; WS3-10;
Isotype	Rabbit IgG
Host	Rabbit
Calculated MW	22611

Additional Information

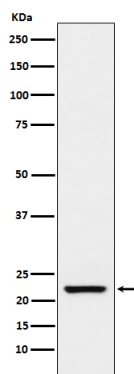
Dilution	WB 1:500~1:2000 IHC 1:50~1:200
Purification	Affinity-chromatography
Immunogen	A synthesized peptide derived from human TAGLN
Description	Actin cross-linking/gelling protein (By similarity). Involved in calcium interactions and contractile properties of the cell that may contribute to replicative senescence.
Storage Condition and Buffer	Rabbit IgG in phosphate buffered saline , pH 7.4, 150mM NaCl, 0.02% sodium azide and 50% glycerol. Store at +4°C short term. Store at -20°C long term. Avoid freeze / thaw cycle.

Protein Information

Name	TAGLN
Synonyms	SM22, WS3-10
Function	Actin cross-linking/gelling protein (By similarity). Involved in calcium interactions and contractile properties of the cell that may contribute to replicative senescence.
Cellular Location	Cytoplasm.

Images

Western blot analysis of TAGLN expression in Human stomach lysate.



Please note: All products are 'FOR RESEARCH USE ONLY. NOT FOR USE IN DIAGNOSTIC OR THERAPEUTIC PROCEDURES'.