

SRP54 Antibody

Rabbit mAb

Catalog # AP92095

Product Information

Application	WB, IHC, FC, IP
Primary Accession	P61011
Reactivity	Rat, Human, Mouse
Clonality	Monoclonal
Other Names	SRP54;
Isotype	Rabbit IgG
Host	Rabbit
Calculated MW	55705

Additional Information

Dilution	WB 1:500~1:2000 IHC 1:50~1:200 IP 1:50 FC 1:50
Purification	Affinity-chromatography
Immunogen	A synthesized peptide derived from human SRP54
Description	Binds to the signal sequence of presecretory protein when they emerge from the ribosomes and transfers them to TRAM (translocating chain-associating membrane protein).
Storage Condition and Buffer	Rabbit IgG in phosphate buffered saline , pH 7.4, 150mM NaCl, 0.02% sodium azide and 50% glycerol. Store at +4°C short term. Store at -20°C long term. Avoid freeze / thaw cycle.

Protein Information

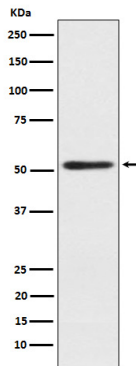
Name	SRP54 (HGNC:11301)
Function	Component of the signal recognition particle (SRP) complex, a ribonucleoprotein complex that mediates the cotranslational targeting of secretory and membrane proteins to the endoplasmic reticulum (ER) (PubMed: 34020957). As part of the SRP complex, associates with the SRP receptor (SR) component SRPRA to target secretory proteins to the endoplasmic reticulum membrane (PubMed: 34020957). Binds to the signal sequence of presecretory proteins when they emerge from the ribosomes (PubMed: 34020957). Displays basal GTPase activity, and stimulates reciprocal GTPase activation of the SR subunit SRPRA (PubMed: 28972538 , PubMed: 34020957). Forms a guanosine 5'-triphosphate (GTP)-dependent complex with the SR subunit SRPRA (PubMed: 34020957). SR compaction and GTPase mediated rearrangement of SR drive SRP-mediated cotranslational protein translocation into the ER (PubMed: 34020957). Requires the presence of SRP9/SRP14 and/or SRP19 to stably interact with RNA (By similarity). Plays a role in proliferation and differentiation of granulocytic cells, neutrophils migration capacity and exocrine pancreas development (PubMed: 28972538 ,

PubMed:[29914977](#)).

Cellular Location

Nucleus speckle. Cytoplasm Endoplasmic reticulum

Images



Western blot analysis of SRP54 expression in 293T cell lysate.

Please note: All products are 'FOR RESEARCH USE ONLY. NOT FOR USE IN DIAGNOSTIC OR THERAPEUTIC PROCEDURES'.