

# Brachyury Antibody

Rabbit mAb

Catalog # AP92097

## Product Information

---

<b>Application</b>	WB, IHC, IF, FC, ICC, IP, IHF
<b>Primary Accession</b>	<a href="#">O15178</a>
<b>Reactivity</b>	Rat, Human, Mouse
<b>Clonality</b>	Monoclonal
<b>Other Names</b>	Brachyury homolog; Bry; Protein T; SAVA; TFT; T-box transcription factor T; TBXT; Brachyury protein;
<b>Isotype</b>	Rabbit IgG
<b>Host</b>	Rabbit
<b>Calculated MW</b>	47443

## Additional Information

---

<b>Dilution</b>	WB 1:500~1:2000 IHC 1:100~1:500 ICC/IF 1:100~1:500 IP 1:100 FC 1:100
<b>Purification</b>	Affinity-chromatography
<b>Immunogen</b>	A synthesized peptide derived from human Brachyury
<b>Description</b>	Involved in the transcriptional regulation of genes required for mesoderm formation and differentiation. Binds to a palindromic site (called T site) and activates gene transcription when bound to such a site.
<b>Storage Condition and Buffer</b>	Rabbit IgG in phosphate buffered saline , pH 7.4, 150mM NaCl, 0.02% sodium azide and 50% glycerol. Store at +4°C short term. Store at -20°C long term. Avoid freeze / thaw cycle.

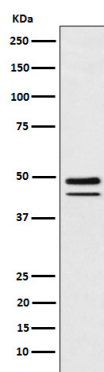
## Protein Information

---

<b>Name</b>	TBXT ( <a href="#">HGNC:11515</a> )
<b>Synonyms</b>	T
<b>Function</b>	Involved in the transcriptional regulation of genes required for mesoderm formation and differentiation. Binds to a palindromic T site 5'-TTCACACCTAGGTGTGAA-3' DNA sequence and activates gene transcription when bound to such a site.
<b>Cellular Location</b>	Nucleus
<b>Tissue Location</b>	Detected in testis, but not in other, normal tissues. Detected in lung tumors (at protein level)

## Images

---



Western blot analysis of Brachyury expression in MUG-Chor1 (human sacral bone chordoma) cell lysate.

Please note: All products are 'FOR RESEARCH USE ONLY. NOT FOR USE IN DIAGNOSTIC OR THERAPEUTIC PROCEDURES'.