

FYB Antibody

Rabbit mAb

Catalog # AP92098

Product Information

Application	WB, IHC, IF, ICC, IHF
Primary Accession	O15117
Reactivity	Human, Mouse
Clonality	Monoclonal
Other Names	ADAP; Fyb; FYN binding protein; p120/p130; SLAP130;
Isotype	Rabbit IgG
Host	Rabbit
Calculated MW	85387

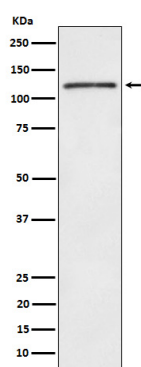
Additional Information

Dilution	WB 1:500~1:2000 IHC 1:50~1:200 ICC/IF 1:50~1:200
Purification	Affinity-chromatography
Immunogen	A synthesized peptide derived from human FYB
Description	Acts as an adapter protein of the FYN and LCP2 signaling cascades in T cells. Modulates the expression of interleukin-2 (IL-2). Involved in platelet activation. Prevents the degradation of SKAP1 and SKAP2.
Storage Condition and Buffer	Rabbit IgG in phosphate buffered saline , pH 7.4, 150mM NaCl, 0.02% sodium azide and 50% glycerol. Store at +4°C short term. Store at -20°C long term. Avoid freeze / thaw cycle.

Protein Information

Name	FYB1 (HGNC:4036)
Synonyms	FYB, SLAP130
Function	Acts as an adapter protein of the FYN and LCP2 signaling cascades in T-cells (By similarity). May play a role in linking T-cell signaling to remodeling of the actin cytoskeleton (PubMed: 10747096 , PubMed: 16980616). Modulates the expression of IL2 (By similarity). Involved in platelet activation (By similarity). Prevents the degradation of SKAP1 and SKAP2 (PubMed: 15849195). May be involved in high affinity immunoglobulin epsilon receptor signaling in mast cells (By similarity).
Cellular Location	Cytoplasm. Nucleus {ECO:0000255 PROSITE-ProRule:PRU00768}. Cell junction {ECO:0000250 UniProtKB:O35601}. Note=Colocalizes with TMEM47 at cell-cell contacts in podocytes. {ECO:0000250 UniProtKB:O35601}
Tissue Location	Expressed in hematopoietic tissues such as myeloid and T-cells, spleen and thymus. Not expressed in B-cells, nor in non- lymphoid tissues

Images



Western blot analysis of FYB expression in TF-1 cell lysate.

Please note: All products are 'FOR RESEARCH USE ONLY. NOT FOR USE IN DIAGNOSTIC OR THERAPEUTIC PROCEDURES'.