

NDUFS4 Antibody

Rabbit mAb

Catalog # AP92100

Product Information

Application	WB, IHC, IF, FC, ICC, IP, IHF
Primary Accession	O43181
Reactivity	Rat, Human, Mouse
Clonality	Monoclonal
Other Names	AQDQ; CI 18; CI AQDQ; Complex I 18 kDa; NDUFS4;
Isotype	Rabbit IgG
Host	Rabbit
Calculated MW	20108

Additional Information

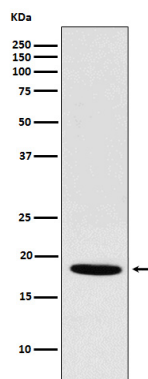
Dilution	WB 1:500~1:2000 IHC 1:50~1:200 ICC/IF 1:50~1:200 IP 1:50 FC 1:40
Purification	Affinity-chromatography
Immunogen	A synthesized peptide derived from human NDUFS4
Description	Accessory subunit of the mitochondrial membrane respiratory chain NADH dehydrogenase (Complex I), that is believed not to be involved in catalysis. Complex I functions in the transfer of electrons from NADH to the respiratory chain. The immediate electron acceptor for the enzyme is believed to be ubiquinone.
Storage Condition and Buffer	Rabbit IgG in phosphate buffered saline , pH 7.4, 150mM NaCl, 0.02% sodium azide and 50% glycerol. Store at +4°C short term. Store at -20°C long term. Avoid freeze / thaw cycle.

Protein Information

Name	NDUFS4
Function	Accessory subunit of the mitochondrial membrane respiratory chain NADH dehydrogenase (Complex I), that is believed not to be involved in catalysis. Complex I functions in the transfer of electrons from NADH to the respiratory chain. The immediate electron acceptor for the enzyme is believed to be ubiquinone.
Cellular Location	Mitochondrion inner membrane; Peripheral membrane protein; Matrix side. Note=The interaction with BCAP31 mediates mitochondria localization.

Images

Western blot analysis of NDUFS4 expression in Rat heart



lysate.

Please note: All products are 'FOR RESEARCH USE ONLY. NOT FOR USE IN DIAGNOSTIC OR THERAPEUTIC PROCEDURES'.