

Alpha actinin 2 Antibody

Rabbit mAb

Catalog # AP92104

Product Information

Application	WB, IHC, IP
Primary Accession	P35609
Reactivity	Rat, Human, Mouse
Clonality	Monoclonal
Other Names	Actin binding protein; Actinin alpha 2; ACTN2; Alpha actinin 2; CMD1AA;
Isotype	Rabbit IgG
Host	Rabbit
Calculated MW	103854

Additional Information

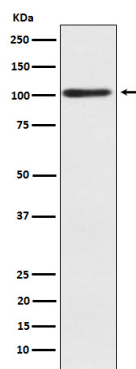
Dilution	WB 1:1000~1:5000 IHC 1:50~1:200 IP 1:30
Purification	Affinity-chromatography
Immunogen	A synthesized peptide derived from human Alpha actinin 2
Description	F-actin cross-linking protein which is thought to anchor actin to a variety of intracellular structures. This is a bundling protein.
Storage Condition and Buffer	Rabbit IgG in phosphate buffered saline , pH 7.4, 150mM NaCl, 0.02% sodium azide and 50% glycerol. Store at +4°C short term. Store at -20°C long term. Avoid freeze / thaw cycle.

Protein Information

Name	ACTN2
Function	F-actin cross-linking protein which is thought to anchor actin to a variety of intracellular structures. This is a bundling protein.
Cellular Location	Cytoplasm, myofibril, sarcomere, Z line. Note=Colocalizes with MYOZ1 and FLNC at the Z-lines of skeletal muscle
Tissue Location	Expressed in both skeletal and cardiac muscle.

Images

Western blot analysis of Alpha actinin 2 expression in human skeletal muscle lysate.



Please note: All products are 'FOR RESEARCH USE ONLY. NOT FOR USE IN DIAGNOSTIC OR THERAPEUTIC PROCEDURES'.