

# ATP2A1/SERCA1 Antibody

Rabbit mAb

Catalog # AP92105

## Product Information

---

|                          |                        |
|--------------------------|------------------------|
| <b>Application</b>       | WB, IHC, IP            |
| <b>Primary Accession</b> | <a href="#">O14983</a> |
| <b>Reactivity</b>        | Human                  |
| <b>Clonality</b>         | Monoclonal             |
| <b>Other Names</b>       | ATP2A; ATP2A1; SERCA1; |
| <b>Isotype</b>           | Rabbit IgG             |
| <b>Host</b>              | Rabbit                 |
| <b>Calculated MW</b>     | 110252                 |

## Additional Information

---

|                                     |   |
|-------------------------------------|---|
| <b>Dilution</b>                     | WB 1:1000~1:5000 IHC 1:50~1:200 IP 1:50   |
| <b>Purification</b>                 | Affinity-chromatography   |
| <b>Immunogen</b>                    | A synthesized peptide derived from human ATP2A1/SERCA1  |
| <b>Description</b>                  | Key regulator of striated muscle performance by acting as the major Ca(2+) ATPase responsible for the reuptake of cytosolic Ca(2+) into the sarcoplasmic reticulum. Catalyzes the hydrolysis of ATP coupled with the translocation of calcium from the cytosol to the sarcoplasmic reticulum lumen. Contributes to calcium sequestration involved in muscular excitation/contraction. |
| <b>Storage Condition and Buffer</b> | Rabbit IgG in phosphate buffered saline , pH 7.4, 150mM NaCl, 0.02% sodium azide and 50% glycerol. Store at +4°C short term. Store at -20°C long term. Avoid freeze / thaw cycle.   |

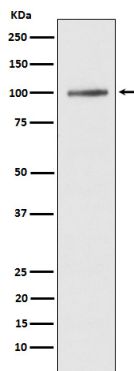
## Protein Information

---

|                          |   |
|--------------------------|---|
| <b>Name</b>              | ATP2A1 ( <a href="#">HGNC:811</a> )   |
| <b>Function</b>          | Key regulator of striated muscle performance by acting as the major Ca(2+) ATPase responsible for the reuptake of cytosolic Ca(2+) into the sarcoplasmic reticulum. Catalyzes the hydrolysis of ATP coupled with the translocation of calcium from the cytosol to the sarcoplasmic reticulum lumen (By similarity). Contributes to calcium sequestration involved in muscular excitation/contraction (PubMed: <a href="#">10914677</a> ). |
| <b>Cellular Location</b> | Endoplasmic reticulum membrane {ECO:0000250 UniProtKB:P04191};<br>Multi-pass membrane protein {ECO:0000250 UniProtKB:P04191};<br>Sarcoplasmic reticulum membrane {ECO:0000250 UniProtKB:P04191};<br>Multi-pass membrane protein {ECO:0000250 UniProtKB:P04191}  |
| <b>Tissue Location</b>   | Skeletal muscle, fast twitch muscle (type II) fibers.   |

## Images

---



Western blot analysis of ATP2A1/SERCA1 expression in human fetal muscle lysate.

Please note: All products are 'FOR RESEARCH USE ONLY. NOT FOR USE IN DIAGNOSTIC OR THERAPEUTIC PROCEDURES'.