

# Aminopeptidase A / CD249 Antibody

Rabbit mAb

Catalog # AP92107

## Product Information

<b>Application</b>	WB, IHC
<b>Primary Accession</b>	<a href="#">Q07075</a>
<b>Reactivity</b>	Human
<b>Clonality</b>	Monoclonal
<b>Other Names</b>	Aminopeptidase A; APA; bp1; CD249; EAP; Enpep; Gp160; Ly51;
<b>Isotype</b>	Rabbit IgG
<b>Host</b>	Rabbit
<b>Calculated MW</b>	109244

## Additional Information

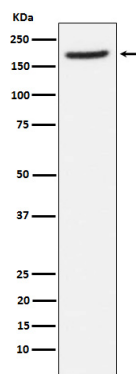
<b>Dilution</b>	WB 1:1000~1:5000 IHC 1:50~1:200
<b>Purification</b>	Affinity-chromatography
<b>Immunogen</b>	A synthesized peptide derived from human Aminopeptidase A / CD249
<b>Description</b>	Appears to have a role in the catabolic pathway of the renin-angiotensin system. Probably plays a role in regulating growth and differentiation of early B-lineage cells.
<b>Storage Condition and Buffer</b>	Rabbit IgG in phosphate buffered saline , pH 7.4, 150mM NaCl, 0.02% sodium azide and 50% glycerol. Store at +4°C short term. Store at -20°C long term. Avoid freeze / thaw cycle.

## Protein Information

<b>Name</b>	ENPEP
<b>Function</b>	Regulates central hypertension through its calcium-modulated preference to cleave N-terminal acidic residues from peptides such as angiotensin II.
<b>Cellular Location</b>	Cell membrane; Single-pass type II membrane protein
<b>Tissue Location</b>	Expressed in choriocarcinoma cancer cell lines (at protein level) (PubMed:10692253). Expressed by epithelial cells of the proximal tubule cells and the glomerulus of the nephron. Also found in a variety of other tissues.

## Images

Western blot analysis of Aminopeptidase A / CD249 expression in human fetal lung lysate.



Please note: All products are 'FOR RESEARCH USE ONLY. NOT FOR USE IN DIAGNOSTIC OR THERAPEUTIC PROCEDURES'.