

SRSF3 Antibody

Rabbit mAb

Catalog # AP92109

Product Information

Application	WB, IHC, IF, FC, ICC, IHF
Primary Accession	P84103
Reactivity	Rat, Human, Mouse
Clonality	Monoclonal
Other Names	Splicing factor; SRp20; SRSF3; X16;
Isotype	Rabbit IgG
Host	Rabbit
Calculated MW	19330

Additional Information

Dilution	WB 1:500~1:2000 IHC 1:50~1:200 ICC/IF 1:50~1:200 FC 1:100
Purification	Affinity-chromatography
Immunogen	A synthesized peptide derived from human SRSF3
Description	May be involved in RNA processing in relation with cellular proliferation and/or maturation.
Storage Condition and Buffer	Rabbit IgG in phosphate buffered saline , pH 7.4, 150mM NaCl, 0.02% sodium azide and 50% glycerol. Store at +4°C short term. Store at -20°C long term. Avoid freeze / thaw cycle.

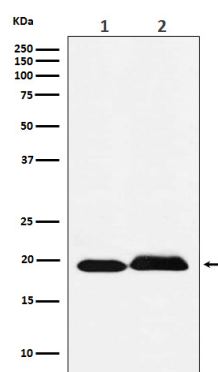
Protein Information

Name	SRSF3
Synonyms	SFRS3, SRP20
Function	Splicing factor, which binds the consensus motif 5'-C[ACU][AU]C[ACU][AC]C-3' within pre-mRNA and promotes specific exons inclusion during alternative splicing (PubMed: 17036044 , PubMed: 26876937 , PubMed: 32440474). Interaction with YTHDC1, a RNA- binding protein that recognizes and binds N6-methyladenosine (m6A)- containing RNAs, promotes recruitment of SRSF3 to its mRNA-binding elements adjacent to m6A sites within exons (PubMed: 26876937). Also functions as an adapter involved in mRNA nuclear export (PubMed: 11336712 , PubMed: 18364396 , PubMed: 28984244). Binds mRNA which is thought to be transferred to the NXF1-NXT1 heterodimer for export (TAP/NXF1 pathway); enhances NXF1-NXT1 RNA-binding activity (PubMed: 11336712 , PubMed: 18364396). Involved in nuclear export of m6A- containing mRNAs via interaction with YTHDC1: interaction with YTHDC1 facilitates m6A-containing mRNA-binding to both SRSF3 and NXF1, promoting mRNA nuclear export (PubMed: 28984244).

Cellular Location

Nucleus. Nucleus speckle. Cytoplasm. Note=Recruited to nuclear speckles following interaction with YTHDC1.

Images



Western blot analysis of SRSF3 expression in (1) Jurkat cell lysate; (2) Rat brain lysate.

Please note: All products are 'FOR RESEARCH USE ONLY. NOT FOR USE IN DIAGNOSTIC OR THERAPEUTIC PROCEDURES'.