

REG3A Antibody (N-term)

Affinity Purified Rabbit Polyclonal Antibody (Pab)

Catalog # AP9210a

Product Information

Application	FC, WB, E
Primary Accession	Q06141
Reactivity	Human
Host	Rabbit
Clonality	Polyclonal
Isotype	Rabbit IgG
Clone Names	RB21532
Calculated MW	19395
Antigen Region	12-39

Additional Information

Gene ID	5068
Other Names	Regenerating islet-derived protein 3-alpha, REG-3-alpha, Hepatointestinal pancreatic protein, HIP/PAP, Human proislet peptide, Pancreatitis-associated protein 1, Regenerating islet-derived protein III-alpha, Reg III-alpha, Regenerating islet-derived protein 3-alpha 165 kDa form, Regenerating islet-derived protein 3-alpha 15 kDa form, REG3A, HIP, PAP, PAP1
Target/Specificity	This REG3A antibody is generated from rabbits immunized with a KLH conjugated synthetic peptide between 12-39 amino acids from the N-terminal region of human REG3A.
Dilution	FC~~1:10~50 WB~~1:1000 E~~Use at an assay dependent concentration.
Format	Purified polyclonal antibody supplied in PBS with 0.09% (W/V) sodium azide. This antibody is purified through a protein A column, followed by peptide affinity purification.
Storage	Maintain refrigerated at 2-8°C for up to 2 weeks. For long term storage store at -20°C in small aliquots to prevent freeze-thaw cycles.
Precautions	REG3A Antibody (N-term) is for research use only and not for use in diagnostic or therapeutic procedures.

Protein Information

Name	REG3A (HGNC:8601)
Function	[Regenerating islet-derived protein 3-alpha 15 kDa form]: Bactericidal C-type

lectin which acts exclusively against Gram-positive bacteria and mediates bacterial killing by binding to surface-exposed carbohydrate moieties of peptidoglycan (PubMed:[16931762](#)). Binds membrane phospholipids and kills bacteria by forming a hexameric membrane-permeabilizing oligomeric pore (PubMed:[24256734](#)).

Cellular Location

Secreted. Note=Found in the apical region of pancreatic acinar cells

Tissue Location

Expressed by keratinocytes (PubMed:27830702). Highly expressed in epidermal keratinocytes of psoriasis patients (at protein level) (PubMed:22727489). Constitutively expressed in intestine. Low expression is found in healthy pancreas. Overexpressed during the acute phase of pancreatitis and in some patients with chronic pancreatitis (PubMed:1469087).

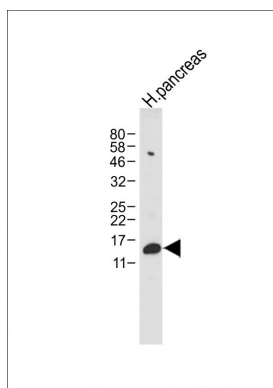
Background

REG3A encodes a pancreatic secretory protein that may be involved in cell proliferation or differentiation. It has similarity to the C-type lectin superfamily. The enhanced expression of this protein is observed during pancreatic inflammation and liver carcinogenesis.

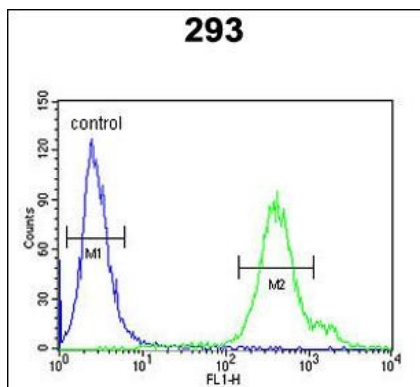
References

Medveczky,P., et.al., Biochem. J. 420 (2), 335-343 (2009)
Scott,L.J., et.al, Proc. Natl. Acad. Sci. U.S.A. 106 (18), 7501-7506 (2009)
Mukherjee,S., et.sl., J. Biol. Chem. 284 (8), 4881-4888 (2009)

Images



Anti-REG3A Antibody (N-term) at 1:1000 dilution + Human pancreas tissue lysate Lysates/proteins at 20 µg per lane. Secondary Goat Anti-Rabbit IgG, (H+L), Peroxidase conjugated at 1/10000 dilution. Predicted band size : 19 kDa Blocking/Dilution buffer: 5% NFDM/TBST.



REG3A Antibody (N-term) (Cat. #AP9210a) flow cytometric analysis of 293 cells (right histogram) compared to a negative control cell (left histogram).FITC-conjugated goat-anti-rabbit secondary antibodies were used for the analysis.