

ATAD2 Antibody

Rabbit mAb

Catalog # AP92111

Product Information

Application	WB, IF, FC, ICC
Primary Accession	Q6PL18
Reactivity	Human
Clonality	Monoclonal
Other Names	ANCCA; Atad2; CT137; L16; PRO2000;
Isotype	Rabbit IgG
Host	Rabbit
Calculated MW	158554

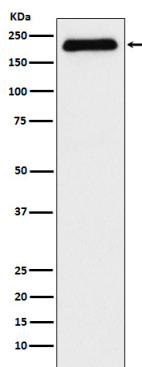
Additional Information

Dilution	WB 1:500~1:2000 ICC/IF 1:50~1:200 FC 1:50
Purification	Affinity-chromatography
Immunogen	A synthesized peptide derived from human ATAD2
Description	May be a transcriptional coactivator of the nuclear receptor ESR1 required to induce the expression of a subset of estradiol target genes, such as CCND1, MYC and E2F1. May play a role in the recruitment or occupancy of CREBBP at some ESR1 target gene promoters. May be required for histone hyperacetylation. Involved in the estrogen-induced cell proliferation and cell cycle progression of breast cancer cells.
Storage Condition and Buffer	Rabbit IgG in phosphate buffered saline , pH 7.4, 150mM NaCl, 0.02% sodium azide and 50% glycerol. Store at +4°C short term. Store at -20°C long term. Avoid freeze / thaw cycle.

Protein Information

Name	ATAD2
Function	May be a transcriptional coactivator of the nuclear receptor ESR1 required to induce the expression of a subset of estradiol target genes, such as CCND1, MYC and E2F1. May play a role in the recruitment or occupancy of CREBBP at some ESR1 target gene promoters. May be required for histone hyperacetylation. Involved in the estrogen-induced cell proliferation and cell cycle progression of breast cancer cells.
Cellular Location	Nucleus
Tissue Location	Highly expressed in estrogen receptor positive breast tumors and in osteosarcoma tumors.

Images



Western blot analysis of ATAD2 expression in MCF-7 cell lysate.

Please note: All products are 'FOR RESEARCH USE ONLY. NOT FOR USE IN DIAGNOSTIC OR THERAPEUTIC PROCEDURES'.