

Cenexin1 / ODF2 Antibody

Rabbit mAb

Catalog # AP92114

Product Information

Application	WB, FC
Primary Accession	Q5BJF6
Reactivity	Human
Clonality	Monoclonal
Other Names	Cenexin 1; Cenexin; CT134; KKT4; ODF 2; ODF 84; odf2; ODF2/1; ODF2/2; ODF84;
Isotype	Rabbit IgG
Host	Rabbit
Calculated MW	95401

Additional Information

Dilution	WB 1:500~1:1000 FC 1:100
Purification	Affinity-chromatography
Immunogen	A synthesized peptide derived from human Cenexin1 / ODF2
Description	Seems to be a major component of sperm tail outer dense fibers (ODF). ODFs are filamentous structures located on the outside of the axoneme in the midpiece and principal piece of the mammalian sperm tail and may help to maintain the passive elastic structures and elastic recoil of the sperm tail.
Storage Condition and Buffer	Rabbit IgG in phosphate buffered saline , pH 7.4, 150mM NaCl, 0.02% sodium azide and 50% glycerol. Store at +4°C short term. Store at -20°C long term. Avoid freeze / thaw cycle.

Protein Information

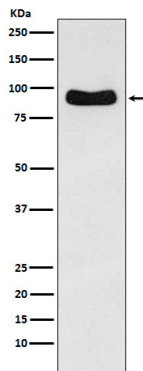
Name	ODF2
Function	Seems to be a major component of sperm tail outer dense fibers (ODF). ODFs are filamentous structures located on the outside of the axoneme in the midpiece and principal piece of the mammalian sperm tail and may help to maintain the passive elastic structures and elastic recoil of the sperm tail. May have a modulating influence on sperm motility. Functions as a general scaffold protein that is specifically localized at the distal/subdistal appendages of mother centrioles. Component of the centrosome matrix required for the localization of PLK1 and NIN to the centrosomes. Required for the formation and/or maintenance of normal CETN1 assembly.
Cellular Location	Cytoplasm, cytoskeleton, microtubule organizing center, centrosome. Cell projection, cilium {ECO:0000250 UniProtKB:A3KGV1}. Cytoplasm, cytoskeleton, microtubule organizing center, centrosome, centriole Cytoplasm, cytoskeleton, spindle pole {ECO:0000250 UniProtKB:A3KGV1} Cell

projection, cilium, flagellum {ECO:0000250|UniProtKB:A3KGV1}
Note=Localized at the microtubule organizing centers in interphase and spindle poles in mitosis. Localized at the distal/subdistal appendages of mother centrioles. {ECO:0000250|UniProtKB:A3KGV1}

Tissue Location

Testis-specific (at protein level). Highly expressed in cytoplasm of step 2 round spermatids. Detected in the middle piece and extends to about half the principal piece of the sperm tails.

Images



Western blot analysis of Cenexin1/ODF2 expression in Hela cell lysate.

Please note: All products are 'FOR RESEARCH USE ONLY. NOT FOR USE IN DIAGNOSTIC OR THERAPEUTIC PROCEDURES'.