

Syntaxin Antibody

Rabbit mAb

Catalog # AP92119

Product Information

Application	WB, IP
Primary Accession	P61266
Reactivity	Rat, Human, Mouse
Clonality	Monoclonal
Other Names	EPIM; Epimorphin; EPM; HPC 1; P35 1; STX1A; Stx1b; STX1B1; STX1B2; STX2; STX2A; STX2B; STX2C; STX3; STX3A;
Isotype	Rabbit IgG
Host	Rabbit
Calculated MW	33245

Additional Information

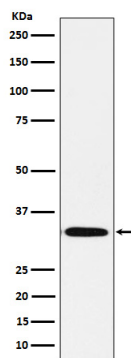
Dilution	WB 1:1000~1:5000 IP 1:50
Purification	Affinity-chromatography
Immunogen	A synthesized peptide derived from human Syntaxin
Description	Potentially involved in docking of synaptic vesicles at presynaptic active zones. May mediate Ca(2+)-regulation of exocytosis acrosomal reaction in sperm.
Storage Condition and Buffer	Rabbit IgG in phosphate buffered saline , pH 7.4, 150mM NaCl, 0.02% sodium azide and 50% glycerol. Store at +4°C short term. Store at -20°C long term. Avoid freeze / thaw cycle.

Protein Information

Name	STX1B
Synonyms	STX1B1, STX1B2
Function	Potentially involved in docking of synaptic vesicles at presynaptic active zones. May mediate Ca(2+)-regulation of exocytosis acrosomal reaction in sperm (By similarity).
Cellular Location	[Isoform 1]: Membrane; Single-pass type IV membrane protein

Images

Western blot analysis of Syntaxin expression in Human fetal brain lysate.



Please note: All products are 'FOR RESEARCH USE ONLY. NOT FOR USE IN DIAGNOSTIC OR THERAPEUTIC PROCEDURES'.