

# Intra Acrosomal Protein Antibody

Rabbit mAb

Catalog # AP92123

## Product Information

---

<b>Application</b>	WB
<b>Primary Accession</b>	<a href="#">P26436</a>
<b>Reactivity</b>	Human
<b>Clonality</b>	Monoclonal
<b>Other Names</b>	ACRV1; Msa63; Sp10; SPACA2;
<b>Isotype</b>	Rabbit IgG
<b>Host</b>	Rabbit
<b>Calculated MW</b>	28156

## Additional Information

---

<b>Dilution</b>	WB 1:500~1:2000
<b>Purification</b>	Affinity-chromatography
<b>Immunogen</b>	A synthesized peptide derived from human Intra Acrosomal Protein
<b>Description</b>	N/A
<b>Storage Condition and Buffer</b>	Rabbit IgG in phosphate buffered saline , pH 7.4, 150mM NaCl, 0.02% sodium azide and 50% glycerol. Store at +4°C short term. Store at -20°C long term. Avoid freeze / thaw cycle.

## Protein Information

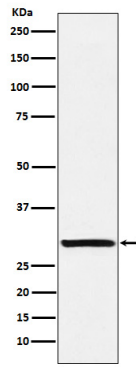
---

<b>Name</b>	ACRV1
<b>Cellular Location</b>	Cytoplasmic vesicle, secretory vesicle, acrosome. Note=Nascent acrosomal vesicle of Golgi phase spermatids
<b>Tissue Location</b>	Testis.

## Images

---

Western blot analysis of Intra Acrosomal Protein expression in Human testis lysate.



Please note: All products are 'FOR RESEARCH USE ONLY. NOT FOR USE IN DIAGNOSTIC OR THERAPEUTIC PROCEDURES'.