

KA1 Antibody

Rabbit mAb

Catalog # AP92126

Product Information

Application	WB
Primary Accession	Q16099
Reactivity	Rat, Human, Mouse
Clonality	Monoclonal
Other Names	EAA1; GluK4; GRIK; Grik4; KA1;
Isotype	Rabbit IgG
Host	Rabbit
Calculated MW	107246

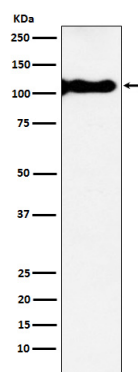
Additional Information

Dilution	WB 1:500~1:1000
Purification	Affinity-chromatography
Immunogen	A synthesized peptide derived from human KA1
Description	Receptor for glutamate. L-glutamate acts as an excitatory neurotransmitter at many synapses in the central nervous system. The postsynaptic actions of Glu are mediated by a variety of receptors that are named according to their selective agonists.
Storage Condition and Buffer	Rabbit IgG in phosphate buffered saline , pH 7.4, 150mM NaCl, 0.02% sodium azide and 50% glycerol. Store at +4°C short term. Store at -20°C long term. Avoid freeze / thaw cycle.

Protein Information

Name	GRIK4
Synonyms	GRIK
Function	Ionotropic glutamate receptor that functions as a cation- permeable ligand-gated ion channel. Cannot form functional channels on its own (PubMed: 8263508). Shows channel activity only in heteromeric assembly with GRIK1, GRIK2 and GRIK3 subunits (By similarity).
Cellular Location	Cell membrane; Multi-pass membrane protein. Postsynaptic cell membrane {ECO:0000250 UniProtKB:Q8BMF5}; Multi-pass membrane protein. Presynaptic cell membrane {ECO:0000250 UniProtKB:Q8BMF5}; Multi-pass membrane protein

Images



Western blot analysis of KA1 expression in Human hippocampus lysate.

Please note: All products are 'FOR RESEARCH USE ONLY. NOT FOR USE IN DIAGNOSTIC OR THERAPEUTIC PROCEDURES'.