

Synapsin II Antibody

Rabbit mAb

Catalog # AP92134

Product Information

Application	WB, IHC
Primary Accession	Q92777
Reactivity	Rat, Human, Mouse
Clonality	Monoclonal
Other Names	SYN 2; SYN II; SYN IIa; SYN IIb; SYN2; Synapsin2; SynapsinII; SYNII; SYNIIa; SYNIIb;
Isotype	Rabbit IgG
Host	Rabbit
Calculated MW	62996

Additional Information

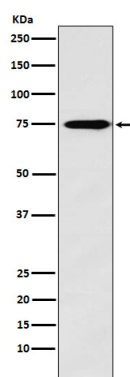
Dilution	WB 1:1000~1:5000 IHC 1:50~1:200
Purification	Affinity-chromatography
Immunogen	A synthesized peptide derived from human Synapsin II
Description	Synapsin II is a member of the synapsin gene family. Synapsins are neuronal phosphoproteins which associate with the cytoplasmic surface of synaptic vesicles.
Storage Condition and Buffer	Rabbit IgG in phosphate buffered saline , pH 7.4, 150mM NaCl, 0.02% sodium azide and 50% glycerol. Store at +4°C short term. Store at -20°C long term. Avoid freeze / thaw cycle.

Protein Information

Name	SYN2
Function	Neuronal phosphoprotein that coats synaptic vesicles, binds to the cytoskeleton, and is believed to function in the regulation of neurotransmitter release. May play a role in noradrenaline secretion by sympathetic neurons (By similarity).
Cellular Location	Synapse.
Tissue Location	Central and peripheral nervous systems.

Images

Western blot analysis of Synapsin II expression in Human fetal brain lysate.



Please note: All products are 'FOR RESEARCH USE ONLY. NOT FOR USE IN DIAGNOSTIC OR THERAPEUTIC PROCEDURES'.