

Hex Antibody

Rabbit mAb

Catalog # AP92135

Product Information

Application	WB, IP
Primary Accession	Q03014
Reactivity	Human
Clonality	Monoclonal
Other Names	HEX; HHEX; HMPH; PRH; PRHX;
Isotype	Rabbit IgG
Host	Rabbit
Calculated MW	30022

Additional Information

Dilution	WB 1:500~1:2000 IP 1:40
Purification	Affinity-chromatography
Immunogen	A synthesized peptide derived from human Hex
Description	Recognizes the DNA sequence 5'-ATTAA-3'. Transcriptional repressor. May play a role in hematopoietic differentiation. Establishes anterior identity at two levels; acts early to enhance canonical WNT-signaling by repressing expression of TLE4, and acts later to inhibit NODAL-signaling by directly targeting NODAL.
Storage Condition and Buffer	Rabbit IgG in phosphate buffered saline , pH 7.4, 150mM NaCl, 0.02% sodium azide and 50% glycerol. Store at +4°C short term. Store at -20°C long term. Avoid freeze / thaw cycle.

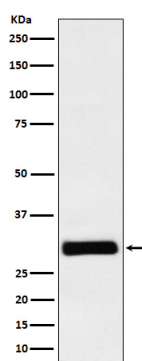
Protein Information

Name	HHEX
Synonyms	HEX, PRH, PRHX
Function	Recognizes the DNA sequence 5'-ATTAA-3' (By similarity). Transcriptional repressor (By similarity). Activator of WNT-mediated transcription in conjunction with CTNNB1 (PubMed: 20028982). Establishes anterior identity at two levels; acts early to enhance canonical WNT- signaling by repressing expression of TLE4, and acts later to inhibit NODAL-signaling by directly targeting NODAL (By similarity). Inhibits EIF4E-mediated mRNA nuclear export (PubMed: 12554669). May play a role in hematopoietic differentiation (PubMed: 8096636).
Cellular Location	Nucleus {ECO:0000250 UniProtKB:P43120}. Nucleus, nuclear body. Cytoplasm

Tissue Location

Liver and promyelocytic leukemia cell line HL-60.

Images



Western blot analysis of Hex expression in K562 cell lysate.

Please note: All products are 'FOR RESEARCH USE ONLY. NOT FOR USE IN DIAGNOSTIC OR THERAPEUTIC PROCEDURES'.