

GDF3 Antibody

Rabbit mAb

Catalog # AP92141

Product Information

Application	WB
Primary Accession	Q9NR23
Reactivity	Rat, Human, Mouse
Clonality	Monoclonal
Other Names	ecat9; GDF3; KFS3; MCOP7; Vgr2;
Isotype	Rabbit IgG
Host	Rabbit
Calculated MW	41387

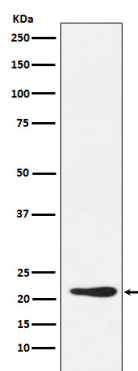
Additional Information

Dilution	WB 1:500~1:2000
Purification	Affinity-chromatography
Immunogen	A synthesized peptide derived from human GDF3
Description	Growth factor involved in early embryonic development and adipose-tissue homeostasis. During embryogenesis controls formation of anterior visceral endoderm and mesoderm and the establishment of anterior-posterior identity through a receptor complex comprising the receptor ACVR1B and the coreceptor TDGF1/Cripto (By similarity).
Storage Condition and Buffer	Rabbit IgG in phosphate buffered saline , pH 7.4, 150mM NaCl, 0.02% sodium azide and 50% glycerol. Store at +4°C short term. Store at -20°C long term. Avoid freeze / thaw cycle.

Protein Information

Name	GDF3
Function	Growth factor involved in early embryonic development and adipose-tissue homeostasis. During embryogenesis controls formation of anterior visceral endoderm and mesoderm and the establishment of anterior-posterior identity through a receptor complex comprising the receptor ACVR1B and the coreceptor CRIPTO (By similarity). Regulates adipose-tissue homeostasis and energy balance under nutrient overload in part by signaling through the receptor complex based on ACVR1C and CRIPTO/Cripto (PubMed: 21805089).
Cellular Location	Secreted. Cytoplasm. Note=Mainly accumulated in the cytoplasm

Images



Western blot analysis of GDF3 expression in 293T cell lysate.

Please note: All products are 'FOR RESEARCH USE ONLY. NOT FOR USE IN DIAGNOSTIC OR THERAPEUTIC PROCEDURES'.