

TAB1 Antibody

Rabbit mAb

Catalog # AP92147

Product Information

Application	WB, IHC, IF, FC, ICC, IP, IHF
Primary Accession	Q15750
Reactivity	Rat, Human, Mouse
Clonality	Monoclonal
Other Names	MAP3K7IP1; TAB1; TAK1 binding protein 1;
Isotype	Rabbit IgG
Host	Rabbit
Calculated MW	54644

Additional Information

Dilution	WB 1:500~1:2000 IHC 1:50~1:200 ICC/IF 1:50~1:200 IP 1:40 FC 1:100
Purification	Affinity-chromatography
Immunogen	A synthesized peptide derived from human TAB1
Description	May be an important signaling intermediate between TGF β receptors and MAP3K7/TAK1. May play an important role in mammalian embryogenesis.
Storage Condition and Buffer	Rabbit IgG in phosphate buffered saline , pH 7.4, 150mM NaCl, 0.02% sodium azide and 50% glycerol. Store at +4°C short term. Store at -20°C long term. Avoid freeze / thaw cycle.

Protein Information

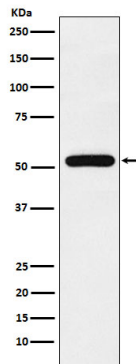
Name	TAB1
Synonyms	MAP3K7IP1
Function	Key adapter protein that plays an essential role in JNK and NF-kappa-B activation and proinflammatory cytokines production in response to stimulation with TLRs and cytokines (PubMed: 22307082 , PubMed: 24403530). Mechanistically, associates with the catalytic domain of MAP3K7/TAK1 to trigger MAP3K7/TAK1 autophosphorylation leading to its full activation (PubMed: 10838074 , PubMed: 25260751 , PubMed: 37832545). Similarly, associates with MAPK14 and triggers its autophosphorylation and subsequent activation (PubMed: 11847341 , PubMed: 29229647). In turn, MAPK14 phosphorylates TAB1 and inhibits MAP3K7/TAK1 activation in a feedback control mechanism (PubMed: 14592977). Also plays a role in recruiting MAPK14 to the TAK1 complex for the phosphorylation of the TAB2 and TAB3 regulatory subunits (PubMed: 18021073).
Cellular Location	Cytoplasm, cytosol. Endoplasmic reticulum membrane; Peripheral membrane protein; Cytoplasmic side. Note=Recruited to the endoplasmic reticulum

following interaction with STING1

Tissue Location

Ubiquitous..

Images



Western blot analysis of TAB1 expression in MCF-7 cell lysate.

Please note: All products are 'FOR RESEARCH USE ONLY. NOT FOR USE IN DIAGNOSTIC OR THERAPEUTIC PROCEDURES'.