

PCB Antibody

Rabbit mAb

Catalog # AP92150

Product Information

Application	WB, IF, ICC
Primary Accession	P11498
Reactivity	Rat, Human, Mouse
Clonality	Monoclonal
Other Names	PC; PCB; Pcx; Pyruvate carboxylase;
Isotype	Rabbit IgG
Host	Rabbit
Calculated MW	129634

Additional Information

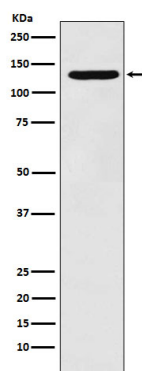
Dilution	WB 1:500~1:2000 ICC/IF 1:50~1:200
Purification	Affinity-chromatography
Immunogen	A synthesized peptide derived from human PCB
Description	Pyruvate carboxylase catalyzes a 2-step reaction, involving the ATP-dependent carboxylation of the covalently attached biotin in the first step and the transfer of the carboxyl group to pyruvate in the second.
Storage Condition and Buffer	Rabbit IgG in phosphate buffered saline , pH 7.4, 150mM NaCl, 0.02% sodium azide and 50% glycerol. Store at +4°C short term. Store at -20°C long term. Avoid freeze / thaw cycle.

Protein Information

Name	PC (HGNC:8636)
Function	Pyruvate carboxylase catalyzes a 2-step reaction, involving the ATP-dependent carboxylation of the covalently attached biotin in the first step and the transfer of the carboxyl group to pyruvate in the second. Catalyzes in a tissue specific manner, the initial reactions of glucose (liver, kidney) and lipid (adipose tissue, liver, brain) synthesis from pyruvate.
Cellular Location	Mitochondrion matrix

Images

Western blot analysis of PCB expression in HepG2 cell lysate.



Please note: All products are 'FOR RESEARCH USE ONLY. NOT FOR USE IN DIAGNOSTIC OR THERAPEUTIC PROCEDURES'.