

RAP1GAP Antibody

Rabbit mAb

Catalog # AP92152

Product Information

Application	WB, IHC, IF, FC, ICC, IP, IHF
Primary Accession	P47736
Reactivity	Rat, Human, Mouse
Clonality	Monoclonal
Other Names	RAP1GA1; Rap1GAP; Rap1GAP1; RAP1GAPII; RAPGAP;
Isotype	Rabbit IgG
Host	Rabbit
Calculated MW	73361

Additional Information

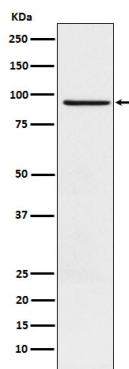
Dilution	WB 1:1000~1:5000 IHC 1:100~1:500 ICC/IF 1:50~1:200 IP 1:50 FC 1:50
Purification	Affinity-chromatography
Immunogen	A synthesized peptide derived from human RAP1GAP
Description	GTPase activator for the nuclear Ras-related regulatory protein RAP-1A (KREV-1), converting it to the putatively inactive GDP-bound state.
Storage Condition and Buffer	Rabbit IgG in phosphate buffered saline , pH 7.4, 150mM NaCl, 0.02% sodium azide and 50% glycerol. Store at +4°C short term. Store at -20°C long term. Avoid freeze / thaw cycle.

Protein Information

Name	RAP1GAP
Synonyms	KIAA0474, RAP1GA1
Function	GTPase activator for the nuclear Ras-related regulatory protein RAP-1A (KREV-1), converting it to the putatively inactive GDP- bound state.
Cellular Location	Golgi apparatus membrane; Peripheral membrane protein
Tissue Location	Significant expression seen in the brain, kidney and pancreas. Abundant in the cerebral cortex and expressed at much lower levels in the spinal cord. Not detected in the lymphoid tissues

Images

Western blot analysis of RAP1GAP expression in SH-SY5Y cell lysate.



Please note: All products are 'FOR RESEARCH USE ONLY. NOT FOR USE IN DIAGNOSTIC OR THERAPEUTIC PROCEDURES'.