

# NDUFAF1 Antibody

Rabbit mAb

Catalog # AP92163

## Product Information

---

<b>Application</b>	WB, IHC, IF, FC, ICC, IP, IHF
<b>Primary Accession</b>	<a href="#">Q9Y375</a>
<b>Reactivity</b>	Human
<b>Clonality</b>	Monoclonal
<b>Other Names</b>	CGI65; CIA30; Ndufaf1;
<b>Isotype</b>	Rabbit IgG
<b>Host</b>	Rabbit
<b>Calculated MW</b>	37764

## Additional Information

---

<b>Dilution</b>	WB 1:500~1:2000 IHC 1:50~1:200 ICC/IF 1:50~1:200 IP 1:50 FC 1:50
<b>Purification</b>	Affinity-chromatography
<b>Immunogen</b>	A synthesized peptide derived from human NDUFAF1
<b>Description</b>	Chaperone protein involved in the assembly of the mitochondrial NADH:ubiquinone oxidoreductase complex (complex I).
<b>Storage Condition and Buffer</b>	Rabbit IgG in phosphate buffered saline , pH 7.4, 150mM NaCl, 0.02% sodium azide and 50% glycerol. Store at +4°C short term. Store at -20°C long term. Avoid freeze / thaw cycle.

## Protein Information

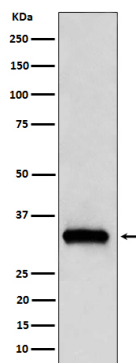
---

<b>Name</b>	NDUFAF1 ( <a href="#">HGNC:18828</a> )
<b>Synonyms</b>	CIA30
<b>Function</b>	As part of the MCIA complex, involved in the assembly of the mitochondrial complex I.
<b>Cellular Location</b>	Mitochondrion. Mitochondrion matrix. Note=Peripherally associated with the matrix face of the mitochondrial inner membrane
<b>Tissue Location</b>	Ubiquitous..

## Images

---

Western blot analysis of NDUFAF1 expression in 293T cell lysate.



Please note: All products are 'FOR RESEARCH USE ONLY. NOT FOR USE IN DIAGNOSTIC OR THERAPEUTIC PROCEDURES'.