

TC10 Antibody

Rabbit mAb

Catalog # AP92164

Product Information

| | |
|--------------------------|--|
| Application | WB, IF, ICC |
| Primary Accession | P17081 |
| Reactivity | Rat, Human |
| Clonality | Monoclonal |
| Other Names | ARHQ; RASL7A; Rho related GTP binding protein RhoQ; Rhoq; TC10A; |
| Isotype | Rabbit IgG |
| Host | Rabbit |
| Calculated MW | 22659 |

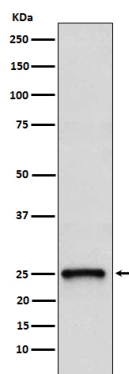
Additional Information

| | |
|-------------------------------------|---|
| Dilution | WB 1:500~1:2000 ICC/IF 1:50~1:200 |
| Purification | Affinity-chromatography |
| Immunogen | A synthesized peptide derived from human TC10 |
| Description | Plasma membrane-associated small GTPase which cycles between an active GTP-bound and an inactive GDP-bound state. In active state binds to a variety of effector proteins to regulate cellular responses. Involved in epithelial cell polarization processes. |
| Storage Condition and Buffer | Rabbit IgG in phosphate buffered saline , pH 7.4, 150mM NaCl, 0.02% sodium azide and 50% glycerol. Store at +4°C short term. Store at -20°C long term. Avoid freeze / thaw cycle. |

Protein Information

| | |
|--------------------------|--|
| Name | RHOQ |
| Synonyms | ARHQ, RASL7A, TC10 |
| Function | Plasma membrane-associated small GTPase which cycles between an active GTP-bound and an inactive GDP-bound state. In active state binds to a variety of effector proteins to regulate cellular responses. Involved in epithelial cell polarization processes. May play a role in CFTR trafficking to the plasma membrane. Causes the formation of thin, actin-rich surface projections called filopodia. |
| Cellular Location | Cytoplasm. Cell membrane; Lipid-anchor |

Images



Western blot analysis of TC10 expression in 293T cell lysate.

Please note: All products are 'FOR RESEARCH USE ONLY. NOT FOR USE IN DIAGNOSTIC OR THERAPEUTIC PROCEDURES'.