

GSTK1 Antibody

Rabbit mAb

Catalog # AP92167

Product Information

Application	WB, IHC, IF, FC, ICC, IP, IHF
Primary Accession	Q9Y2Q3
Reactivity	Human
Clonality	Monoclonal
Other Names	GST; GST class kappa; GST13; Gstk1; hGSTK1;
Isotype	Rabbit IgG
Host	Rabbit
Calculated MW	25497

Additional Information

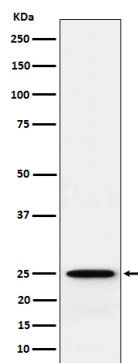
Dilution	WB 1:500~1:2000 IHC 1:50~1:200 ICC/IF 1:50~1:200 IP 1:50 FC 1:50
Purification	Affinity-chromatography
Immunogen	A synthesized peptide derived from human GSTK1
Description	Significant glutathione conjugating activity is found only with the model substrate, 1-chloro-2,4-dinitrobenzene (CDNB).
Storage Condition and Buffer	Rabbit IgG in phosphate buffered saline , pH 7.4, 150mM NaCl, 0.02% sodium azide and 50% glycerol. Store at +4°C short term. Store at -20°C long term. Avoid freeze / thaw cycle.

Protein Information

Name	GSTK1
Function	Glutathione S-transferase that catalyzes the conjugation of glutathione to exogenous and endogenous compounds (PubMed: 14709161 , PubMed: 14742434). Significant glutathione conjugating activity is found only with the model substrate, 1-chloro-2,4-dinitrobenzene (CDNB) (PubMed: 14709161).
Cellular Location	Peroxisome.
Tissue Location	Ubiquitous..

Images

Western blot analysis of GSTK1 expression in 293T cell lysate.



Please note: All products are 'FOR RESEARCH USE ONLY. NOT FOR USE IN DIAGNOSTIC OR THERAPEUTIC PROCEDURES'.