

COPS3 Antibody

Rabbit mAb

Catalog # AP92169

Product Information

| | |
|--------------------------|---|
| Application | WB, IF, FC, ICC, IP |
| Primary Accession | Q9UNS2 |
| Reactivity | Rat, Human, Mouse |
| Clonality | Monoclonal |
| Other Names | COP9 subunit 3; cops3; CSN3; JAB 1 containing signalosome subunit 3; SGN3; Signalosome subunit 3; |
| Isotype | Rabbit IgG |
| Host | Rabbit |
| Calculated MW | 47873 |

Additional Information

| | |
|-------------------------------------|--|
| Dilution | WB 1:500~1:2000 ICC/IF 1:50~1:200 IP 1:50 FC 1:50 |
| Purification | Affinity-chromatography |
| Immunogen | A synthesized peptide derived from human COPS3 |
| Description | Component of the COP9 signalosome complex (CSN), a complex involved in various cellular and developmental processes. The CSN complex is an essential regulator of the ubiquitin (Ubl) conjugation pathway by mediating the deneddylation of the cullin subunits of SCF-type E3 ligase complexes, leading to decrease the Ubl ligase activity of SCF-type complexes such as SCF, CSA or DDB2. |
| Storage Condition and Buffer | Rabbit IgG in phosphate buffered saline , pH 7.4, 150mM NaCl, 0.02% sodium azide and 50% glycerol. Store at +4°C short term. Store at -20°C long term. Avoid freeze / thaw cycle. |

Protein Information

| | |
|-----------------|--|
| Name | COPS3 |
| Synonyms | CSN3 |
| Function | Component of the COP9 signalosome complex (CSN), a complex involved in various cellular and developmental processes. The CSN complex is an essential regulator of the ubiquitin (Ubl) conjugation pathway by mediating the deneddylation of the cullin subunits of SCF- type E3 ligase complexes, leading to decrease the Ubl ligase activity of SCF-type complexes such as SCF, CSA or DDB2. The complex is also involved in phosphorylation of p53/TP53, c-jun/JUN, IkappaBalpha/NFKBIA, ITPK1 and IRF8/ICSBP, possibly via its association with CK2 and PKD kinases. CSN-dependent phosphorylation of TP53 and JUN promotes and protects degradation by the Ubl system, respectively. |

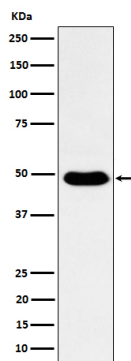
Cellular Location

Cytoplasm. Nucleus

Tissue Location

Widely expressed. Expressed at high level in heart and skeletal muscle.

Images



Western blot analysis of COPS3 expression in HeLa cell lysate.

Please note: All products are 'FOR RESEARCH USE ONLY. NOT FOR USE IN DIAGNOSTIC OR THERAPEUTIC PROCEDURES'.