

Apolipoprotein F Antibody

Rabbit mAb

Catalog # AP92174

Product Information

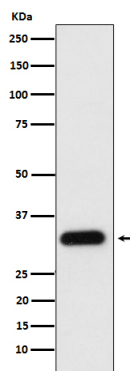
Application	WB, IF, ICC
Primary Accession	Q13790
Reactivity	Human
Clonality	Monoclonal
Other Names	Apof; Apolipoprotein F; LTIP;
Isotype	Rabbit IgG
Host	Rabbit
Calculated MW	33 KDa

Additional Information

Dilution	WB 1:500~1:2000 ICC/IF 1:50~1:200
Purification	Affinity-chromatography
Immunogen	A synthesized peptide derived from human Apolipoprotein F
Description	Minor apolipoprotein that associates with LDL. Inhibits cholesteryl ester transfer protein (CETP) activity and appears to be an important regulator of cholesterol transport. Also associates to a lesser degree with VLDL, Apo-AI and Apo-AII.
Storage Condition and Buffer	Rabbit IgG in phosphate buffered saline , pH 7.4, 150mM NaCl, 0.02% sodium azide and 50% glycerol. Store at +4°C short term. Store at -20°C long term. Avoid freeze / thaw cycle.

Protein Information

Images



Western blot analysis of Apolipoprotein F expression in human plasma cell lysate.

Please note: All products are 'FOR RESEARCH USE ONLY. NOT FOR USE IN DIAGNOSTIC OR THERAPEUTIC PROCEDURES'.