

Otx2 Antibody

Rabbit mAb

Catalog # AP92176

Product Information

Application	WB
Primary Accession	P32243
Reactivity	Human
Clonality	Monoclonal
Other Names	CPHD6; MCOPS5; Orthodenticle 2; otx2;
Isotype	Rabbit IgG
Host	Rabbit
Calculated MW	31636

Additional Information

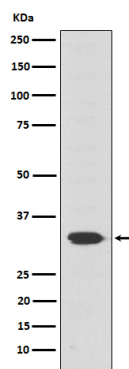
Dilution	WB 1:500~1:2000
Purification	Affinity-chromatography
Immunogen	A synthesized peptide derived from human Otx2
Description	Probably plays a role in the development of the brain and the sense organs. Can bind to the BCD target sequence (BTS): 5'-TCTAATCCC-3'.
Storage Condition and Buffer	Rabbit IgG in phosphate buffered saline , pH 7.4, 150mM NaCl, 0.02% sodium azide and 50% glycerol. Store at +4°C short term. Store at -20°C long term. Avoid freeze / thaw cycle.

Protein Information

Name	OTX2
Function	Transcription factor probably involved in the development of the brain and the sense organs. Can bind to the bicoid/BCD target sequence (BTS): 5'-TCTAATCCC-3'.
Cellular Location	Nucleus.

Images

Western blot analysis of Otx2 expression in Y79 cell lysate.



Please note: All products are 'FOR RESEARCH USE ONLY. NOT FOR USE IN DIAGNOSTIC OR THERAPEUTIC PROCEDURES'.