

ERGIC3 Antibody (N-term)

Affinity Purified Rabbit Polyclonal Antibody (Pab)

Catalog # AP9217a

Product Information

Application	WB, IHC-P, E
Primary Accession	Q9Y282
Other Accession	Q9CQE7 , Q4R8X1 , Q803I2 , Q5EAE0
Reactivity	Human
Predicted	Bovine, Zebrafish, Monkey, Mouse
Host	Rabbit
Clonality	Polyclonal
Isotype	Rabbit IgG
Clone Names	RB22586
Calculated MW	43222
Antigen Region	1-30

Additional Information

Gene ID	51614
Other Names	Endoplasmic reticulum-Golgi intermediate compartment protein 3, Serologically defined breast cancer antigen NY-BR-84, ERGIC3, C20orf47, ERV46, SDBCAG84
Target/Specificity	This ERGIC3 antibody is generated from rabbits immunized with a KLH conjugated synthetic peptide between 1-30 amino acids from the N-terminal region of human ERGIC3.
Dilution	WB~~1:1000 IHC-P~~1:100~500 E~~Use at an assay dependent concentration.
Format	Purified polyclonal antibody supplied in PBS with 0.09% (W/V) sodium azide. This antibody is purified through a protein A column, followed by peptide affinity purification.
Storage	Maintain refrigerated at 2-8°C for up to 2 weeks. For long term storage store at -20°C in small aliquots to prevent freeze-thaw cycles.
Precautions	ERGIC3 Antibody (N-term) is for research use only and not for use in diagnostic or therapeutic procedures.

Protein Information

Name	ERGIC3
Synonyms	C20orf47, ERV46, SDBCAG84

Function	Possible role in transport between endoplasmic reticulum and Golgi. Positively regulates trafficking of the secretory proteins SERPINA1/alpha1-antitrypsin and HP/haptoglobin (PubMed: 31142615).
Cellular Location	Endoplasmic reticulum-Golgi intermediate compartment membrane; Multi-pass membrane protein. Golgi apparatus, cis-Golgi network membrane; Multi-pass membrane protein. Endoplasmic reticulum membrane; Multi-pass membrane protein. Note=Cycles between the endoplasmic reticulum and the Golgi

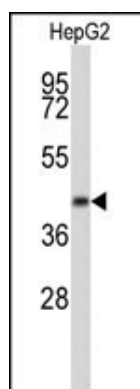
Background

ERGIC3 is possible role in transport between endoplasmic reticulum and Golgi.

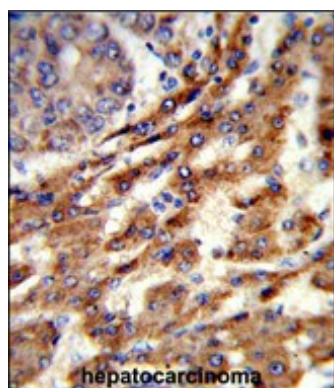
References

Nishikawa,M., et.al., Gene 386 (1-2), 42-51 (2007)
 Breuza,L., et.al., J. Biol. Chem. 279 (45), 47242-47253 (2004)

Images

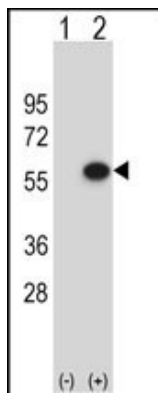


Western blot analysis of ERGIC3 Antibody (N-term) (Cat. #RB22586) in HepG2 cell line lysates (35ug/lane). ERGIC3 (arrow) was detected using the purified Pab.



Formalin-fixed and paraffin-embedded human hepatocarcinoma reacted with ERGIC3 Antibody (N-term), which was peroxidase-conjugated to the secondary antibody, followed by DAB staining. This data demonstrates the use of this antibody for immunohistochemistry; clinical relevance has not been evaluated.

Western blot analysis of ERGIC3 (arrow) using rabbit polyclonal ERGIC3 Antibody (N-term) (Cat. #AP9217a). 293 cell lysates (2 ug/lane) either nontransfected (Lane 1) or transiently transfected (Lane 2) with the ERGIC3 gene.



Please note: All products are 'FOR RESEARCH USE ONLY. NOT FOR USE IN DIAGNOSTIC OR THERAPEUTIC PROCEDURES'.