

HSF2 Antibody

Rabbit mAb

Catalog # AP92187

Product Information

Application	WB, IF, FC, ICC
Primary Accession	Q03933
Reactivity	Human
Clonality	Monoclonal
Other Names	Heat shock factor protein 2; HSF2; HSTF 2;
Isotype	Rabbit IgG
Host	Rabbit
Calculated MW	60348

Additional Information

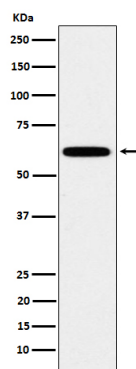
Dilution	WB 1:500~1:2000 ICC/IF 1:50~1:200 FC 1:50
Purification	Affinity-chromatography
Immunogen	A synthesized peptide derived from human HSF2
Description	DNA-binding protein that specifically binds heat shock promoter elements (HSE) and activates transcription. In higher eukaryotes, HSF is unable to bind to the HSE unless the cells are heat shocked.
Storage Condition and Buffer	Rabbit IgG in phosphate buffered saline , pH 7.4, 150mM NaCl, 0.02% sodium azide and 50% glycerol. Store at +4°C short term. Store at -20°C long term. Avoid freeze / thaw cycle.

Protein Information

Name	HSF2
Synonyms	HSTF2
Function	DNA-binding protein that specifically binds heat shock promoter elements (HSE) and activates transcription. In higher eukaryotes, HSF is unable to bind to the HSE unless the cells are heat shocked.
Cellular Location	Cytoplasm. Nucleus. Note=Cytoplasmic during normal growth and moves to the nucleus upon activation

Images

Western blot analysis of HSF2 expression in HeLa cell lysate.



Please note: All products are 'FOR RESEARCH USE ONLY. NOT FOR USE IN DIAGNOSTIC OR THERAPEUTIC PROCEDURES'.