

GCDFP 15 Antibody

Rabbit mAb

Catalog # AP92189

Product Information

Application	WB, IF, ICC, IP
Primary Accession	P12273
Reactivity	Human
Clonality	Monoclonal
Other Names	BRST2; GCDGP15; gp17; GPIP4; PIP; Prolactin induced protein; SABP; Secretory actin binding protein;
Isotype	Rabbit IgG
Host	Rabbit
Calculated MW	16572

Additional Information

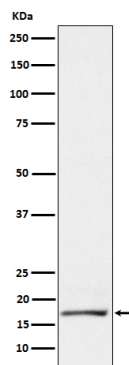
Dilution	WB 1:500~1:2000 ICC/IF 1:50~1:200 IP 1:50
Purification	Affinity-chromatography
Immunogen	A synthesized peptide derived from human GCDFP 15
Description	Belongs to the PIP family.
Storage Condition and Buffer	Rabbit IgG in phosphate buffered saline , pH 7.4, 150mM NaCl, 0.02% sodium azide and 50% glycerol. Store at +4°C short term. Store at -20°C long term. Avoid freeze / thaw cycle.

Protein Information

Name	PIP
Synonyms	GCDFP15, GPIP4
Cellular Location	Secreted.
Tissue Location	Expressed in pathological conditions of the mammary gland and in several exocrine tissues, such as the lacrimal, salivary, and sweat glands

Images

Western blot analysis of GCDFP 15 expression in T47D cell lysate.



Please note: All products are 'FOR RESEARCH USE ONLY. NOT FOR USE IN DIAGNOSTIC OR THERAPEUTIC PROCEDURES'.