

Plastin L Antibody

Rabbit mAb

Catalog # AP92196

Product Information

Application	WB, IHC, IF, FC, ICC, IP, IHF
Primary Accession	P13796
Reactivity	Human
Clonality	Monoclonal
Other Names	CP64; L plastin; LC64P; LCP1; LPL; Lplastin; Plastin 2; PLS2;
Isotype	Rabbit IgG
Host	Rabbit
Calculated MW	70288

Additional Information

Dilution	WB 1:500~1:2000 IHC 1:50~1:200 ICC/IF 1:50~1:200 IP 1:50 FC 1:50
Purification	Affinity-chromatography
Immunogen	A synthesized peptide derived from human Plastin L
Description	Actin-binding protein. Plays a role in the activation of T-cells in response to costimulation through TCR/CD3 and CD2 or CD28. Modulates the cell surface expression of IL2RA/CD25 and CD69.
Storage Condition and Buffer	Rabbit IgG in phosphate buffered saline , pH 7.4, 150mM NaCl, 0.02% sodium azide and 50% glycerol. Store at +4°C short term. Store at -20°C long term. Avoid freeze / thaw cycle.

Protein Information

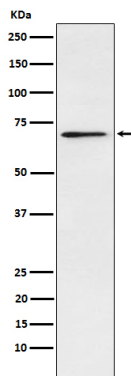
Name	LCP1
Synonyms	PLS2
Function	Actin-binding protein (PubMed: 16636079 , PubMed: 17294403 , PubMed: 28493397). Plays a role in the activation of T-cells in response to costimulation through TCR/CD3 and CD2 or CD28 (PubMed: 17294403). Modulates the cell surface expression of IL2RA/CD25 and CD69 (PubMed: 17294403).
Cellular Location	Cytoplasm, cytoskeleton. Cell junction. Cell projection. Cell projection, ruffle membrane {ECO:0000250 UniProtKB:Q61233, ECO:0000269 PubMed:16636079}; Peripheral membrane protein {ECO:0000250 UniProtKB:Q61233}; Cytoplasmic side {ECO:0000250 UniProtKB:Q61233}. Note=Relocalizes to the immunological synapse between peripheral blood T-lymphocytes and antibody-presenting cells in response to costimulation through TCR/CD3 and CD2 or CD28 (PubMed:17294403). Associated with the actin cytoskeleton at membrane

ruffles. Relocalizes to actin-rich cell projections upon serine phosphorylation (PubMed:16636079). {ECO:0000250|UniProtKB:Q61233, ECO:0000269|PubMed:16636079, ECO:0000269|PubMed:17294403}

Tissue Location

Detected in intestinal microvilli, hair cell stereocilia, and fibroblast filopodia, in spleen and other lymph node- containing organs. Expressed in peripheral blood T-lymphocytes, neutrophils, monocytes, B-lymphocytes, and myeloid cells

Images



Western blot analysis of Plastin L expression in Jurkat cell lysate.

Please note: All products are 'FOR RESEARCH USE ONLY. NOT FOR USE IN DIAGNOSTIC OR THERAPEUTIC PROCEDURES'.