

EWSR1 Antibody

Rabbit mAb

Catalog # AP92203

Product Information

| | |
|--------------------------|--------------------------------------|
| Application | WB, IHC, IF, ICC, IHF |
| Primary Accession | Q01844 |
| Reactivity | Rat, Human, Mouse |
| Clonality | Monoclonal |
| Other Names | EWS; Ewsr1; RNA binding protein EWS; |
| Isotype | Rabbit IgG |
| Host | Rabbit |
| Calculated MW | 68478 |

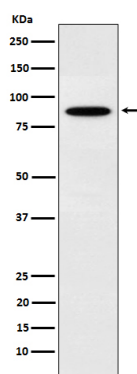
Additional Information

| | |
|-------------------------------------|---|
| Dilution | WB 1:500~1:2000 IHC 1:50~1:200 ICC/IF 1:50~1:200 |
| Purification | Affinity-chromatography |
| Immunogen | A synthesized peptide derived from human EWSR1 |
| Description | Might normally function as a repressor. EWS-fusion-proteins (EFPS) may play a role in the tumorigenic process. They may disturb gene expression by mimicking, or interfering with the normal function of CTD-POLII within the transcription initiation complex. |
| Storage Condition and Buffer | Rabbit IgG in phosphate buffered saline , pH 7.4, 150mM NaCl, 0.02% sodium azide and 50% glycerol. Store at +4°C short term. Store at -20°C long term. Avoid freeze / thaw cycle. |

Protein Information

| | |
|--------------------------|---|
| Name | EWSR1 |
| Synonyms | EWS |
| Function | Binds to ssRNA containing the consensus sequence 5'-AGGUAA-3' (PubMed: 21256132). Might normally function as a transcriptional repressor (PubMed: 10767297). EWS-fusion-proteins (EFPS) may play a role in the tumorigenic process. They may disturb gene expression by mimicking, or interfering with the normal function of CTD-POLII within the transcription initiation complex. They may also contribute to an aberrant activation of the fusion protein target genes. |
| Cellular Location | Nucleus. Cytoplasm. Cell membrane. Note=Relocates from cytoplasm to ribosomes upon PTK2B/FAK2 activation |
| Tissue Location | Ubiquitous. |

Images



Western blot analysis of EWSR1 expression in K562 cell lysate.

Please note: All products are 'FOR RESEARCH USE ONLY. NOT FOR USE IN DIAGNOSTIC OR THERAPEUTIC PROCEDURES'.