

MBD2 Antibody

Rabbit mAb

Catalog # AP92205

Product Information

Application	WB, IHC, IF, ICC, IHF
Primary Accession	Q9UBB5
Reactivity	Human
Clonality	Monoclonal
Other Names	Demethylase; DMTase; Mbd2; MBD2a;
Isotype	Rabbit IgG
Host	Rabbit
Calculated MW	43255

Additional Information

Dilution	WB 1:500~1:2000 IHC 1:50~1:200 ICC/IF 1:50~1:200
Purification	Affinity-chromatography
Immunogen	A synthesized peptide derived from human MBD2
Description	Binds CpG islands in promoters where the DNA is methylated at position 5 of cytosine within CpG dinucleotides. Binds hemimethylated DNA as well. Recruits histone deacetylases and DNA methyltransferases. Acts as transcriptional repressor and plays a role in gene silencing.
Storage Condition and Buffer	Rabbit IgG in phosphate buffered saline , pH 7.4, 150mM NaCl, 0.02% sodium azide and 50% glycerol. Store at +4°C short term. Store at -20°C long term. Avoid freeze / thaw cycle.

Protein Information

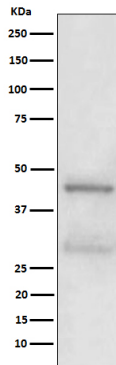
Name	MBD2 (HGNC:6917)
Function	Binds CpG islands in promoters where the DNA is methylated at position 5 of cytosine within CpG dinucleotides (PubMed: 9774669). Binds hemimethylated DNA as well (PubMed: 10947852 , PubMed: 24307175). Recruits histone deacetylases and DNA methyltransferases to chromatin (PubMed: 10471499 , PubMed: 10947852). Acts as a component of the histone deacetylase NuRD complex which participates in the remodeling of chromatin (PubMed: 16428440 , PubMed: 28977666). Acts as a transcriptional repressor and plays a role in gene silencing (PubMed: 10471499 , PubMed: 10947852 , PubMed: 16415179). Functions as a scaffold protein, targeting GATAD2A and GATAD2B to chromatin to promote repression (PubMed: 16415179). May enhance the activation of some unmethylated cAMP-responsive promoters (PubMed: 12665568).
Cellular Location	Nucleus. Chromosome Note=Nuclear, in discrete foci (PubMed:12183469). Detected at replication foci in late S phase. Localizes to methylated chromatin

(PubMed:16428440). Localizes to sites of DNA damage in a manner partially dependent on ZMYND8 (PubMed:27732854)

Tissue Location

Highly expressed in brain, heart, kidney, stomach, testis and placenta.

Images



Western blot analysis of MBD2 expression in A431 cell lysate.

Please note: All products are 'FOR RESEARCH USE ONLY. NOT FOR USE IN DIAGNOSTIC OR THERAPEUTIC PROCEDURES'.