

# GSTM1 Antibody

Rabbit mAb

Catalog # AP92215

## Product Information

---

<b>Application</b>	WB
<b>Primary Accession</b>	<a href="#">P09488</a>
<b>Reactivity</b>	Rat, Human, Mouse
<b>Clonality</b>	Monoclonal
<b>Other Names</b>	MU; H-B; GST1; GTH4; GTM1; MU-1; GSTM1-1; MGC26563; GSTM1a-1a; GSTM1b-1b;
<b>Isotype</b>	Rabbit IgG
<b>Host</b>	Rabbit
<b>Calculated MW</b>	25712

## Additional Information

---

<b>Dilution</b>	WB 1:500~1:2000
<b>Purification</b>	Affinity-chromatography
<b>Immunogen</b>	A synthesized peptide derived from human Glutathione S Transferase mu
<b>Description</b>	Conjugation of reduced glutathione to a wide number of exogenous and endogenous hydrophobic electrophiles.
<b>Storage Condition and Buffer</b>	Rabbit IgG in phosphate buffered saline , pH 7.4, 150mM NaCl, 0.02% sodium azide and 50% glycerol. Store at +4°C short term. Store at -20°C long term. Avoid freeze / thaw cycle.

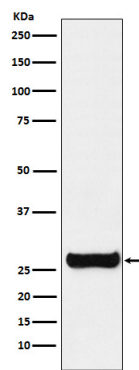
## Protein Information

---

<b>Name</b>	GSTM1 ( <a href="#">HGNC:4632</a> )
<b>Synonyms</b>	GST1
<b>Function</b>	Conjugation of reduced glutathione to a wide number of exogenous and endogenous hydrophobic electrophiles. Involved in the formation of glutathione conjugates of both prostaglandin A2 (PGA2) and prostaglandin J2 (PGJ2) (PubMed: <a href="#">9084911</a> ). Participates in the formation of novel hepoxilin regioisomers (PubMed: <a href="#">21046276</a> ).
<b>Cellular Location</b>	Cytoplasm.
<b>Tissue Location</b>	Liver (at protein level).

## Images

---



Western blot analysis of GSTM1 expression in SH-SY5Y cell lysate.

Please note: All products are 'FOR RESEARCH USE ONLY. NOT FOR USE IN DIAGNOSTIC OR THERAPEUTIC PROCEDURES'.