

ODC1 Antibody

Rabbit mAb

Catalog # AP92216

Product Information

Application	WB
Primary Accession	P11926
Reactivity	Rat, Human, Mouse
Clonality	Monoclonal
Other Names	Dodc1; ODC; Odc1; ODC2; RNODC;
Isotype	Rabbit IgG
Host	Rabbit
Calculated MW	51148

Additional Information

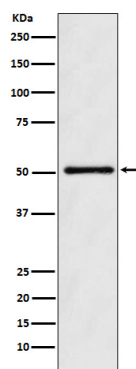
Dilution	WB 1:500~1:2000
Purification	Affinity-chromatography
Immunogen	A synthesized peptide derived from human Ornithine Decarboxylase
Description	Amine and polyamine biosynthesis; putrescine biosynthesis via L-ornithine pathway; putrescine from L-ornithine: step 1/1.
Storage Condition and Buffer	Rabbit IgG in phosphate buffered saline , pH 7.4, 150mM NaCl, 0.02% sodium azide and 50% glycerol. Store at +4°C short term. Store at -20°C long term. Avoid freeze / thaw cycle.

Protein Information

Name	ODC1
Function	Catalyzes the first and rate-limiting step of polyamine biosynthesis that converts ornithine into putrescine, which is the precursor for the polyamines, spermidine and spermine. Polyamines are essential for cell proliferation and are implicated in cellular processes, ranging from DNA replication to apoptosis.

Images

Western blot analysis of ODC1 expression in K562 cell lysate.



Please note: All products are 'FOR RESEARCH USE ONLY. NOT FOR USE IN DIAGNOSTIC OR THERAPEUTIC PROCEDURES'.