

TEAD1/2/3/4 Antibody

Rabbit mAb

Catalog # AP92223

Product Information

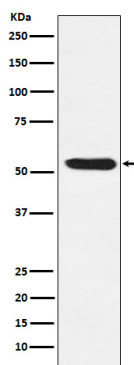
Application	WB
Primary Accession	P28347/Q15561/Q15562/Q99594
Reactivity	Human
Clonality	Monoclonal
Other Names	DTEF 1; NTEF 1; TCF13; TEAD1; TEAD2; TEAD3; TEAD4; TEAD5; TEF1; TEF4; TEF5;
Isotype	Rabbit IgG
Host	Rabbit
Calculated MW	54 KDa

Additional Information

Dilution	WB 1:500~1:1000
Purification	Affinity-chromatography
Immunogen	A synthesized peptide derived from human TEAD1 + TEAD2 + TEAD3 + TEAD4
Description	Transcription factor which plays a key role in the Hippo signaling pathway, a pathway involved in organ size control and tumor suppression by restricting proliferation and promoting apoptosis.
Storage Condition and Buffer	Rabbit IgG in phosphate buffered saline , pH 7.4, 150mM NaCl, 0.02% sodium azide and 50% glycerol. Store at +4°C short term. Store at -20°C long term. Avoid freeze / thaw cycle.

Protein Information

Images



Western blot analysis of TEAD1/2/3/4 expression in SW480 cell lysate.

Please note: All products are 'FOR RESEARCH USE ONLY. NOT FOR USE IN DIAGNOSTIC OR THERAPEUTIC PROCEDURES'.