

MRC2/ENDO180 Antibody

Rabbit mAb

Catalog # AP92242

Product Information

Application	WB
Primary Accession	Q9UBG0
Reactivity	Human
Clonality	Monoclonal
Other Names	CD280 antigen; MRC2; ENDO180; KIAA0709; UPARAP;
Isotype	Rabbit IgG
Host	Rabbit
Calculated MW	166674

Additional Information

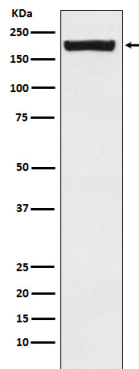
Dilution	WB 1:500~1:2000
Purification	Affinity-chromatography
Immunogen	A synthesized peptide derived from human MRC2
Description	May play a role as endocytotic lectin receptor displaying calcium-dependent lectin activity. Internalizes glycosylated ligands from the extracellular space for release in an endosomal compartment via clathrin-mediated endocytosis.
Storage Condition and Buffer	Rabbit IgG in phosphate buffered saline , pH 7.4, 150mM NaCl, 0.02% sodium azide and 50% glycerol. Store at +4°C short term. Store at -20°C long term. Avoid freeze / thaw cycle.

Protein Information

Name	MRC2
Synonyms	CLEC13E, ENDO180, KIAA0709, UPARAP
Function	May play a role as endocytotic lectin receptor displaying calcium-dependent lectin activity. Internalizes glycosylated ligands from the extracellular space for release in an endosomal compartment via clathrin-mediated endocytosis. May be involved in plasminogen activation system controlling the extracellular level of PLAUR/PLAU, and thus may regulate protease activity at the cell surface. May contribute to cellular uptake, remodeling and degradation of extracellular collagen matrices. May play a role during cancer progression as well as in other chronic tissue destructive diseases acting on collagen turnover. May participate in remodeling of extracellular matrix cooperating with the matrix metalloproteinases (MMPs).
Cellular Location	Membrane; Single-pass type I membrane protein.
Tissue Location	Ubiquitous with low expression in brain, placenta, lung, kidney, pancreas,

spleen, thymus and colon. Expressed in endothelial cells, fibroblasts and macrophages. Highly expressed in fetal lung and kidney.

Images



Western blot analysis of MRC2/ENDO180 expression in Saos2 cell lysate.

Please note: All products are 'FOR RESEARCH USE ONLY. NOT FOR USE IN DIAGNOSTIC OR THERAPEUTIC PROCEDURES'.