

CD97 Antibody

Rabbit mAb

Catalog # AP92243

Product Information

Application	WB, IHC, FC
Primary Accession	P48960
Reactivity	Rat, Human
Clonality	Monoclonal
Other Names	ADGRE5; CD97; TM7LN1;
Isotype	Rabbit IgG
Host	Rabbit
Calculated MW	91869

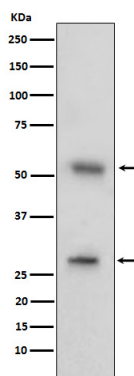
Additional Information

Dilution	WB 1:500~1:2000 IHC 1:50~1:200 FC 1:50
Purification	Affinity-chromatography
Immunogen	A synthesized peptide derived from human CD97
Description	Receptor potentially involved in both adhesion and signaling processes early after leukocyte activation. Plays an essential role in leukocyte migration.
Storage Condition and Buffer	Rabbit IgG in phosphate buffered saline , pH 7.4, 150mM NaCl, 0.02% sodium azide and 50% glycerol. Store at +4°C short term. Store at -20°C long term. Avoid freeze / thaw cycle.

Protein Information

Name	ADGRE5 (HGNC:1711)
Function	Receptor potentially involved in both adhesion and signaling processes early after leukocyte activation. Plays an essential role in leukocyte migration.
Cellular Location	Cell membrane {ECO:0000250 UniProtKB:Q9Z0M6}; Multi-pass membrane protein
Tissue Location	Broadly expressed, found on most hematopoietic cells, including activated lymphocytes, monocytes, macrophages, dendritic cells, and granulocytes. Expressed also abundantly by smooth muscle cells. Expressed in thyroid, colorectal, gastric, esophageal and pancreatic carcinomas too. Expression are increased under inflammatory conditions in the CNS of multiple sclerosis and in synovial tissue of patients with rheumatoid arthritis. Increased expression of CD97 in the synovium is accompanied by detectable levels of soluble CD97 in the synovial fluid

Images



Western blot analysis of CD97 expression in human tonsil cell lysate.

Please note: All products are 'FOR RESEARCH USE ONLY. NOT FOR USE IN DIAGNOSTIC OR THERAPEUTIC PROCEDURES'.