

WAPL Antibody

Rabbit mAb

Catalog # AP92263

Product Information

Application	WB, IF, ICC, IP
Primary Accession	Q7Z5K2
Reactivity	Human
Clonality	Monoclonal
Other Names	FOE; WAPAL; WAPL; Wings apart like homolog;
Isotype	Rabbit IgG
Host	Rabbit
Calculated MW	132946

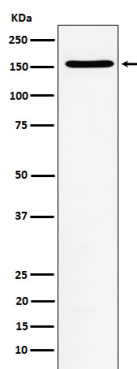
Additional Information

Dilution	WB 1:500~1:2000 ICC/IF 1:50~1:200 IP 1:50
Purification	Affinity-chromatography
Immunogen	A synthesized peptide derived from human WAPL
Description	Regulator of sister chromatid cohesion in mitosis which negatively regulates cohesin association with chromatin. Involved in both sister chromatid cohesion during interphase and sister-chromatid resolution during early stages of mitosis. Couples DNA replication to sister chromatid cohesion.
Storage Condition and Buffer	Rabbit IgG in phosphate buffered saline , pH 7.4, 150mM NaCl, 0.02% sodium azide and 50% glycerol. Store at +4°C short term. Store at -20°C long term. Avoid freeze / thaw cycle.

Protein Information

Name	WAPL (HGNC:23293)
Synonyms	FOE, KIAA0261, WAPAL
Function	Regulator of sister chromatid cohesion in mitosis which negatively regulates cohesin association with chromatin (PubMed: 26299517). Involved in both sister chromatid cohesion during interphase and sister-chromatid resolution during early stages of mitosis. Couples DNA replication to sister chromatid cohesion. Cohesion ensures that chromosome partitioning is accurate in both meiotic and mitotic cells and plays an important role in DNA repair.
Cellular Location	[Isoform 2]: Nucleus.
Tissue Location	Isoform 1 is highly expressed in uterine cervix tumor. Isoform 2 is widely expressed with a high level in skeletal muscle and heart.

Images



Western blot analysis of WAPL expression in Jurkat cell lysate.

Please note: All products are 'FOR RESEARCH USE ONLY. NOT FOR USE IN DIAGNOSTIC OR THERAPEUTIC PROCEDURES'.