

Phospho-ErbB3 (Y1222) Antibody

Rabbit mAb

Catalog # AP92264

Product Information

Application	WB, IF, ICC, IP
Primary Accession	P21860
Reactivity	Human
Clonality	Monoclonal
Other Names	ERBB3; HER3; LCCS2; p180 ErbB3; p45 sErbB3; p85 sErbB3;
Isotype	Rabbit IgG
Host	Rabbit
Calculated MW	148098

Additional Information

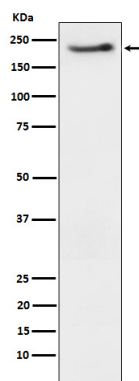
Dilution	WB 1:500~1:2000 ICC/IF 1:50~1:200 IP 1:50
Purification	Affinity-chromatography
Immunogen	A synthesized peptide derived from human ErbB3
Description	Binds and is activated by neuregulins and NTAK.
Storage Condition and Buffer	Rabbit IgG in phosphate buffered saline , pH 7.4, 150mM NaCl, 0.02% sodium azide and 50% glycerol. Store at +4°C short term. Store at -20°C long term. Avoid freeze / thaw cycle.

Protein Information

Name	ERBB3
Synonyms	HER3
Function	Tyrosine-protein kinase that plays an essential role as cell surface receptor for neuregulins. Binds to neuregulin-1 (NRG1) and is activated by it; ligand-binding increases phosphorylation on tyrosine residues and promotes its association with the p85 subunit of phosphatidylinositol 3-kinase (PubMed: 20682778). May also be activated by CSPG5 (PubMed: 15358134). Involved in the regulation of myeloid cell differentiation (PubMed: 27416908).
Cellular Location	[Isoform 1]: Cell membrane; Single-pass type I membrane protein
Tissue Location	Epithelial tissues and brain.

Images

Western blot analysis of Phospho-ErbB3 (Y1222)



expression in SKBR3 cell treated with neuregulin.

Please note: All products are 'FOR RESEARCH USE ONLY. NOT FOR USE IN DIAGNOSTIC OR THERAPEUTIC PROCEDURES'.